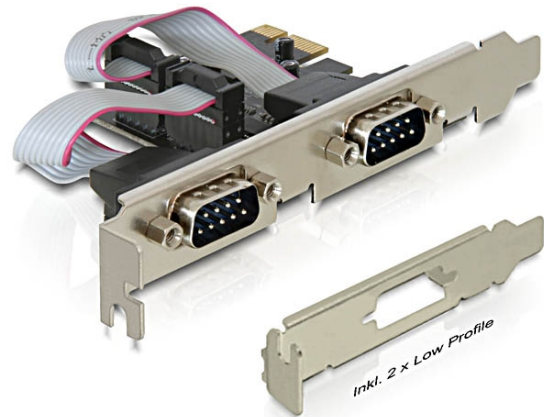


Delock PCI Express kartica > 2 x Serijska

Opis

Delock PCI Express kartica proširuje računalo za dva vanjska serijska priključka. U ovu karticu mogu se priključiti različiti uređaji, kao što su skener, pisač, miš itd. Pomoću isporučenih niskoprofilnih nosača, PCI Express kartica se također može ugraditi i u mini računalo.



Tehnički podaci

- Priključak:
vanjski: 2 x serijska muška RS-232 DB9
unutarnji: 1 x PCI Express x1, V1.1
- Skup čipova: Oxford
- Brzina prijenosa podataka do 230,4 Kbps
- Kompatibilno s 16C950 UART
- FIFO: 128 bajta

Preduvjeti sustava

- Windows 7/7-64/8.1/8.1-64/10/10-64
- Računalo s jednim slobodnim PCI Express utorom

Sadržaj pakiranja

- PCI Express kartica
- 2 x nosač niskog profila
- CD s upravljačkim programom
- Korisnički priručnik

Predmet br. 89220

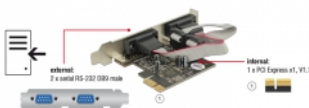
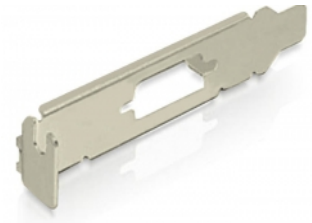
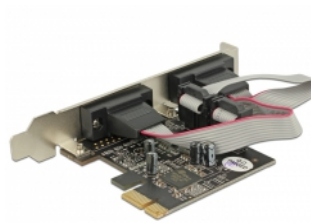
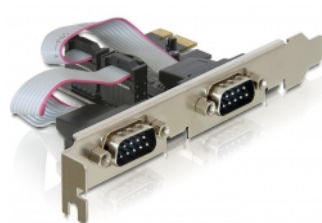
EAN: 4043619892204

Zemlja podrijetla: China

Pakiranje: Retail Box



Slike





General	
Fattore di forma:	Low Profile
Function:	Compliant with PCI Power Management 1.2
Specification:	PCIe 1.1
Supported operating system:	Windows 7 32-bit Windows 7 64-bit Windows 8.1 32-bit Windows 8.1 64-bit Windows 10 32-bit Windows 10 64-bit
Slot:	PCIe
Interface	
External:	2 x RS-232 DB9 seriale maschio
Internal:	1 x PCI Express x1, V1.1
Technical characteristics	
Chipset:	OXPCIe952
Data transfer rate:	up to 230.4 Kb/s
FIFO:	128 byte
UART:	16C950
Physical characteristics	
Pin finishing:	gold-plated
Tipo di vite:	#4-40 UNC
Slot bracket:	low profile standard
Depth:	11.1 mm
Width:	65 mm
Height:	59 mm
Colour:	anthracite