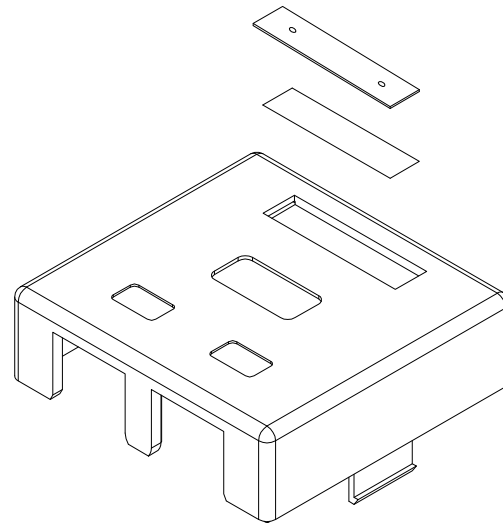


# C6 MOUNT BOX STP 50u



## Performance:

Meets C6 EIA/TIA 568B Standard.

## Materials:

Body : Fireproof ABS UL-94V0  
Jack : 8P8C 50 micro inches gold plated  
PCB : FR-4 / UL-94V0  
IDC Cap : Fireproof PC  
IDC Body : Fireproof ABS UL-94V0  
IDC Pin : Phosphor Bronze & Tinned

IDC Description : For 22-26 AWG.  
For 110 or Krone punch-down Tool  
Toolless (when use IDC cap directly)

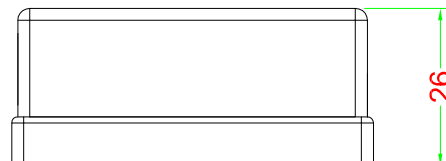
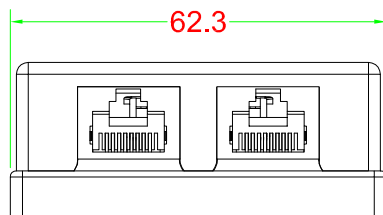
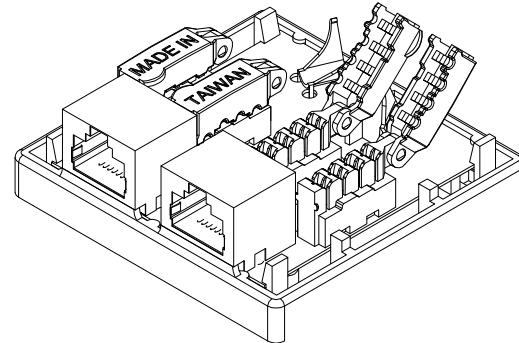
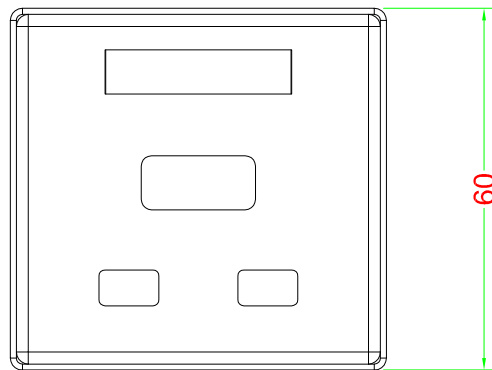
## Electrical Specifications:

Insulation Resistance : 500M ohms (min.)  
Contact Resistance : 20m ohms (max.)  
Current Rating : 1.5 Amps .  
DC Resistance : 0.1 ohms (max.)  
Withstanding Voltage : 1000 VAC RMS @ 60Hz / 1 min.

## Mechanical Specifications:

IDC Punch Down Cycle : Over 250 Cycles (min.)  
Jack Insertion Cycle : Over 2000 Cycles (min.)

Operation Temperature : -40 °C ~ +70 °C



DRAW NO:			ITEM NO:		
	APPR		CUSTOMER:		
UNIT: m/m	DESIGN		DATE:		
SCALE:	Ref. NO:		TOLERANCE:	· ± 1    · X ± 0.2    · XX ± 0.15	