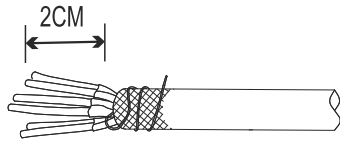


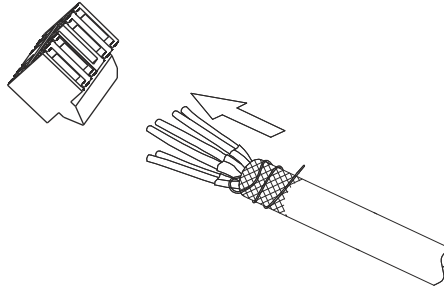
CAT6 / CAT6A SHIELDED TOOLLESS PLUG INSTRUCTION MANUAL

1



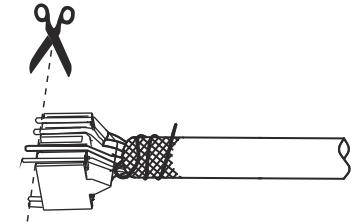
TAKE OF THE CABLE JACKET BY
TOOL ABOUT 2CM

2



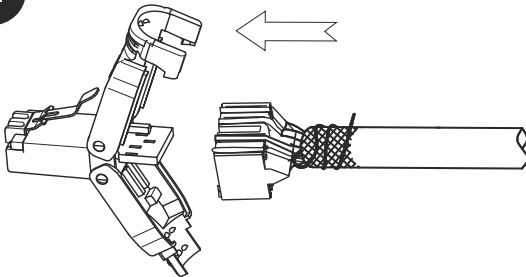
PUT CABLE INTO IDC
ACCORDING TERMINAL T568

3



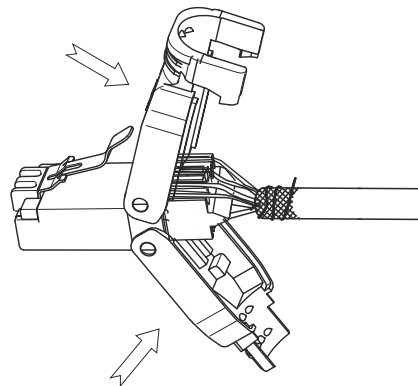
CUT AWAY THE EXTRA WIRES

4



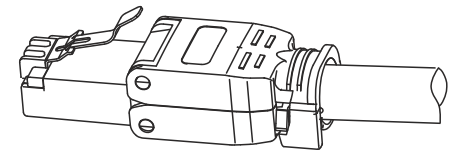
TO INSERT IDC INTO PCB

5



PRESS DOWN BOTH SIDE METAL
HOUSING UNTIL THE WIRE INTO
THE IDC PIN CHASE

6



THE FINISHED PRODUCT