

Delock LTE UMTS GSM Antenna N femmina 7 - 10 dBi direzionale muro e asta esterna di montaggio

Descrizione

Questa antenna Delock consente l'uso di varie bande LTE, GSM e UMTS all'interno e all'esterno. È completamente compatibile con Bluetooth, WLAN a 2,4 GHz, ZigBee, DECT, Z-Wave e LoRa 868 MHz / 915 MHz.



Specifiche

- Connettore: 1 x N femmina
- Gamma di frequenza:
698 - 960 MHz
1710 - 2700 MHz
- ZigBee, Bluetooth, WLAN 2,4 GHz, DECT, Z-Wave, LoRa 868 MHz / 915 MHz
- Guadagno antenna: 7 - 10 dBi
- Impedenza: 50 Ohm
- VSWR: 1,8
- Polarizzazione: verticale
- Angolo fascio orizzontale: 70°
- Angolo fascio verticale: 55°
- Potenza di trasmissione: max. 100 W
- Materiale custodia: ABS
- Grado di protezione: IP65
- Colore: bianco
- Temperatura di esercizio: -40 °C ~ 70 °C
- Dimensioni (LxPxA): ca. 210 x 180 x 45 mm

Requisiti di sistema

- Cavo con N maschio

Contenuto della confezione

- Antenna LTE

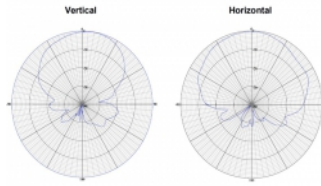
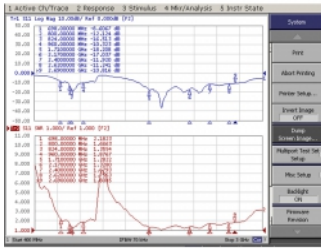
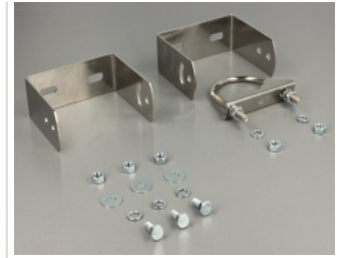
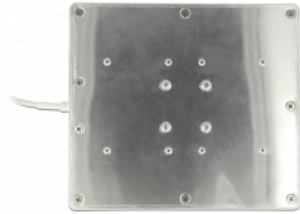
Articolo n. 12435

EAN: 4043619124350

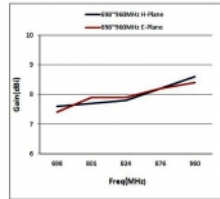
Paese di origine: China

Pacchetto: White Box

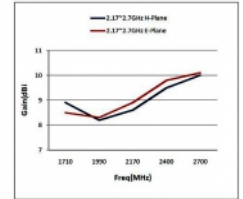
Immagini



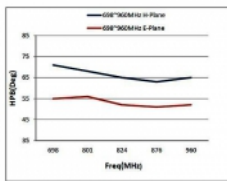
H-Plane	
MHz	dBi
608	5
800	6.8
960	7.1
Average: 6.3	



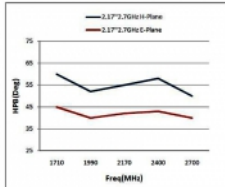
H-Plane	
MHz	dBi
1710	8.9
2170	8.6
2400	9.5
2700	10
Average: 9.25	



H-Plane	
MHz	HPBW(Deg)
608	71
800	68
960	65
Average: 68	



H-Plane	
MHz	HPBW(Deg)
1710	60
2170	55
2400	53
2700	50
Average: 55.7	



E-Plane	
MHz	HPBW(Deg)
608	55
800	56
960	52
Average: 54.3	

E-Plane	
MHz	HPBW(Deg)
1710	45
2170	42
2400	43
2700	40
Average: 42.5	

Interface	
connector:	1 x porta N femmina
Technical characteristics	
Frequency range:	1710 - 2700 MHz 698 MHz - 960 MHz
Gain:	7 - 10 dBi
Beam width horizontal:	70°
Beam width vertical:	55°
Impedance:	50 Ω
Temperatura di esercizio:	-40 °C ~ 70 °C
Polarisation:	vertical
Power handling:	100W
VSWR:	1,8
Physical characteristics	
Materiale custodia:	ABS
Weight:	0.5 kg
Lunghezza:	210 mm
Width:	180 mm
Height:	45 mm
Colour:	bianco