

Delock LTE UMTS GSM antena N ženska 7 - 10 dBi jednosmjerna montaža na zid i držač na otvorenom

Opis

Ova Delock antena omogućuje vam uporabu različitih LTE, GSM i UMTS opsega na otvorenim i u zatvorenim prostorima. U potpunosti je usklađena za Bluetooth, WLAN 2,4 GHz, ZigBee, DECT, Z-Wave i LoRa 868 MHz / 915 MHz.



Tehnički podaci

- Priključak: 1 x N ženski
- Frekvencijski opseg:
698 - 960 MHz
1710 - 2700 MHz
- ZigBee, Bluetooth, WLAN 2,4 GHz, DECT, Z-Wave, LoRa 868 MHz / 915 MHz
- Pojačanje antene: 7 - 10 dBi
- Impedancija: 50 ohma
- VSWR: 1,8
- Polarizacija: vertikalna
- Horizontalni kut snopa: 70°
- Vertikalnog kut snopa: 55°
- Snaga na predaji: maks. 100 W
- Materijal kućišta: ABS
- Stupanj zaštite: IP65
- Boja: bijela
- Radna temperatura: -40 °C ~ 70 °C
- Mjere (DxŠxV): oko 210 x 180 x 45 mm

Preduvjeti sustava

- Kabel s N muškim

Sadržaj pakiranja

- LTE antena

Predmet br. 12435

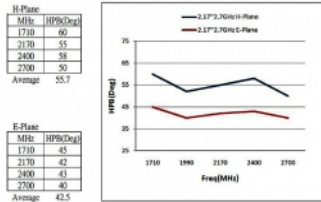
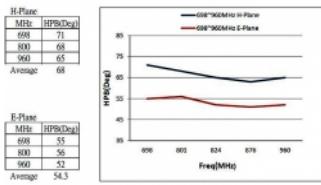
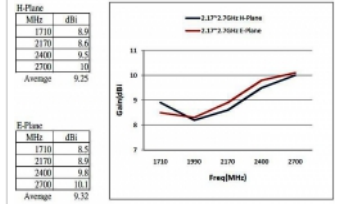
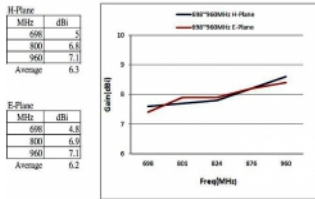
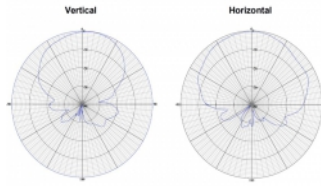
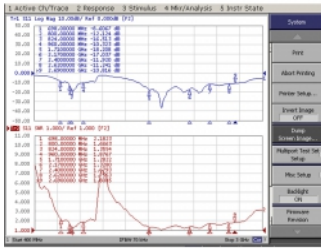
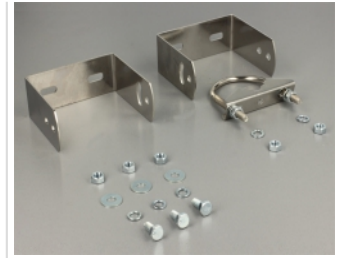
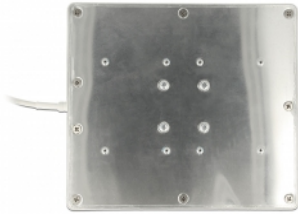
EAN: 4043619124350

Zemlja podrijetla: China

Pakiranje: White Box



Slike





| Interface | |
|---------------------------|--------------------------------------|
| priključak: | 1 x N jack |
| Technical characteristics | |
| Frequency range: | 1710 - 2700 MHz 698 MHz - 960 MHz |
| Gain: | 7 - 10 dBi |
| Beam width horizontal: | 70° |
| Beam width vertical: | 55° |
| Impedancijaa: | 50 Ω |
| Radna temperatura: | -40 °C ~ 70 °C |
| Polarisation: | vertikal |
| Power handling: | 100W |
| VSWR: | 1,8 |
| Physical characteristics | |
| Materijal kućišta: | ABS |
| Weight: | 0.5 kg |
| Duljina: | 210 mm |
| Width: | 180 mm |
| Height: | 45 mm |
| Boja: | bijela |