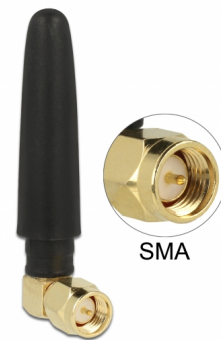


# Delock WLAN 802.11 b/g/n Antenna SMA plug 90° 2 dBi omnidirectional fixed with flexible material black

## Description

This antenna by Delock allows the usage of the 2.4 GHz band indoors. It is completely compatible to Bluetooth, WLAN 2.4 GHz, ZigBee 2.4 GHz, ISM 2.4 GHz.



**Item no. 12624**

EAN: 4043619126248

Country of origin: China

Package: Zip poly bag

## Specification

- Connector: 1 x SMA plug 90°
- Bluetooth, WLAN 2.4 GHz, ZigBee 2.4 GHz, ISM
- Frequency range: 2.4 - 2.5 GHz
- Antenna gain: 2 dBi
- Impedance: 50 Ohm
- VSWR: 2.5
- Polarisation: linear, vertical
- Operating temperature: -40 °C ~ 85 °C
- Housing material: rubber
- Colour: black
- Antenna length: ca. 5 cm

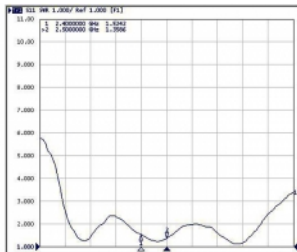
## System requirements

- Device with a free SMA jack

## Package content

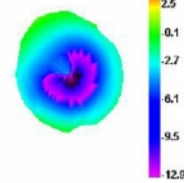
- Antenna

## Images

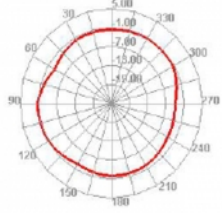


Freq (MHz)	Effi (%)	Effi (dB)	Gain (dBi)	Gain (dBd)
2400	70,99	-1,49	4,17	2,02
2410	69,47	-1,58	3,91	1,76
2420	69,27	-1,59	3,83	1,68
2430	69,19	-1,60	3,67	1,52
2440	68,08	-1,67	3,54	1,39
2450	69,57	-1,58	3,58	1,43
2460	70,66	-1,51	3,56	1,41
2470	71,76	-1,44	3,57	1,42
2480	72,30	-1,41	3,50	1,35
2490	73,39	-1,34	3,56	1,41
2500	73,47	-1,34	3,60	1,45

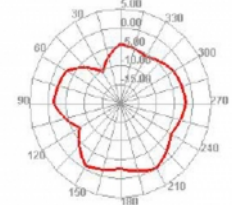
2400.000MHz



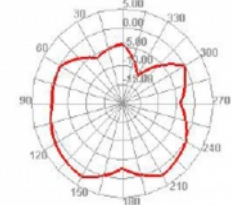
2400.000MHz H



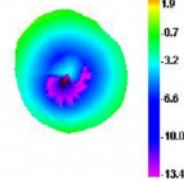
2400.000MHz E1



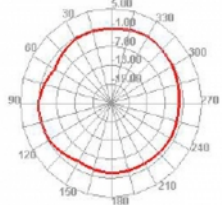
2400.000MHz E2



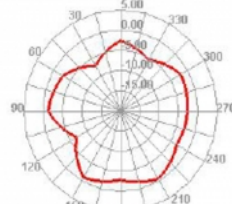
2450.000MHz



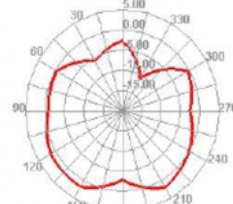
2450.000MHz H



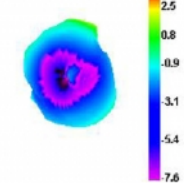
2450.000MHz E1



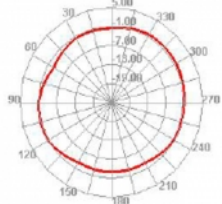
2450.000MHz E2



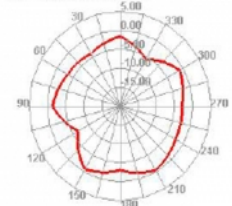
2500.000MHz



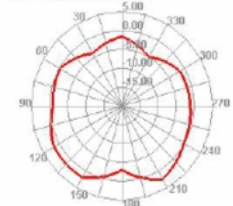
2500.000MHz H



2500.000MHz E1



2500.000MHz E2



## General

Suitable for indoor:	yes
----------------------	-----

## Technical characteristics

Frequency range:	2.4 - 2.5 GHz
Antenna gain:	2 dBi
Impedance:	50 $\Omega$
Operating temperature:	-40 °C ~ 85 °C
Polarisation:	vertical
VSWR:	2.5

## Physical characteristics

Antenna type:	dipol antenna omnidirectional
Housing colour:	black
Housing material:	rubber
Length:	50 mm