

# Delock 5.25" Installation Frame for 1 x 3.5" + 2 x 2.5" hard drives

## Description

This Delock installation frame is multifunctional useable in a 5.25" drive bay of a computer. It can supports a 3.5" device like a card reader on the bottom side, and additional two 2.5" hard drives above. Furthermore, instead of a 3.5" device another 3.5" hard drive can be installed. For that purpose the 3.5" cover must be removed from the frame and inserted at the front.



**Item no. 18000**

EAN: 4043619180004

Country of origin: China

Package: Retail Box

## Specification

- For installation into 5.25" bay
- For 1. option:
  - 1 x 3.5" device
  - 2 x 2.5" HDD / SSD
- 2. option:
  - 1 x 3.5" HDD / SSD
  - 2 x 2.5" HDD / SSD
- 3. option:
  - 3 x 2.5" HDD / SSD
- For 2nd and 3rd option the cover must be removed from the frame and inserted in the front
- Supports 2.5" hard drive height:
  - 2 x 7 mm up to 9.5 mm
  - 1 x 7 mm up to 15 mm
- Material: plastic
- Colour: black

## System requirements

- PC with one free 5.25" bay

## Package content

- 5.25" installation frame
- Screws

## Images



1st option:  
1 x 3.5" device  
2 x 2.5" HDD / SSD



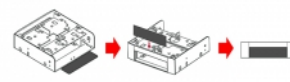
2nd option:  
1 x 3.5" HDD / SSD  
2 x 2.5" HDD / SSD



3rd option:  
3 x 2.5" HDD / SSD



Please note for 2nd and 3rd option the cover must be removed from the frame and inserted in the front



## General

|                           |   |
|---------------------------|---|
| Form factor:              | 5.25"   |
| Suitable for data medium: | 2.5"<br>3.5"<br>SSD or HDD<br>height up to 15.0 mm<br>height up to 9.5 mm |

## Physical characteristics

|           |         |
|-----------|---------|
| Material: | Plastic |
| Colour:   | black   |