

Push Button for Installation 19 mm 4 x Screw Terminal LED green

Description

This push button by Delock is ideal for **installation in control panels**, for example in **industry, control or regulation technology**. Push buttons can also be found in the **automotive industry** or the consumer sector. For example, as doorbells or triggers for lighting systems with timers such as those found in hallways.

Button

A so called button, or push button, returns to its initial position after being pressed.

Opener and closer

The NO (closer) contact establishes a connection between two contacts, while the NC (opener) contact releases them.

Please Note

The installation should only be carried out by qualified electricians in compliance with the usual national power supply guidelines.

Grounding is necessary for low-voltage systems to ensure the safety and functionality of the system.



Item no. 20978

EAN: 4043619209781

Country of origin: China

Package: Retail Box

Technical details

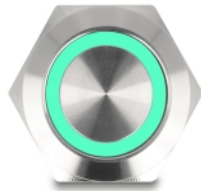
- Connectors: 4 x screw terminal
- Switch type: 1 closer (NO)
- Load limit: AC 230 V~ / 3 A
- Number of contacts: 4
- Number of open contact: 1
- Function: momentary
- Actuator: flat
- Operating temperature: -25 °C ~ 55 °C
- Mounting hole diameter: ca. 19 mm
- Hexagon nut spanner width: 22 mm
- Mounting depth: ca. 28 mm
- Thread size: M19
- LED lighting: green
- LED voltage: 12 V
- LED type: ring

- Material: stainless steel nickel plated
- Mechanical life: 1,000,000 cycles
- Electrical service life: 100,000 cycles
- Protection class: IP65
- Dimensions (LxD): ca. 30 x 25 mm

Package content

- Push-button

Images



General

Mounting type:	Screw mounting
Protection class:	IP65
LED indicator:	ring
Style:	momentary

Technical characteristics

Load limit:	AC 230 V~ / 3 A
Operating temperature:	-25 °C ~ 55 °C

Physical characteristics

Housing material:	stainless steel nickel plated
Colour:	silver
Thread type:	M19
LED colour:	green
Mounting hole diameter:	19 mm

Manufacturer information

Street	Beeskowdamm 13/15
Postal code	14167
City	Berlin
Country	Deutschland
E-Mail	info@delock.de
Website	www.delock.de