

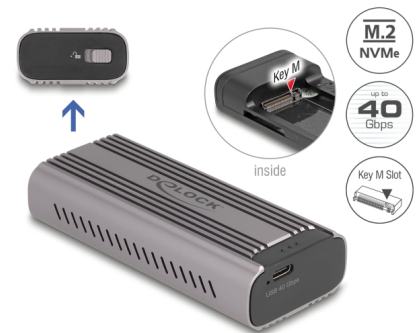
Delock USB Type-C™ 40 Gbps Enclosure for 1 x M.2 NVMe PCIe SSD

Description

This enclosure by Delock enables the installation of an **M.2 PCIe NVMe SSD in 2280, 2260 and 2242 format**, it can be connected via Thunderbolt™ 3, Thunderbolt™ 4 or USB-C™ to the PC or laptop. The **robust metal housing with cooling fins** ensures an optimum temperature of the memory.

USB 40 Gbps

Due to USB 40 Gbps compatibility, the Delock enclosure can be connected to Thunderbolt™ 3 and 4 ports, as well as to all USB Type-C™ ports. The **maximum data transfer rate depends on the host device**.



Item no. 42029

EAN: 4043619420292

Country of origin: China

Package: Retail Box

Technical details

- Connectors:
external: 1 x USB 40 Gbps USB Type-C™ female
internal: 1 x M.2 key M slot
- Chipset: Asmedia ASM2464PD
- Supports M.2 modules in format 2280, 2260 and 2242 with key M or key B+M based on PCIe (NVMe)
- Maximum height of the components on the module: 1.5 mm, application of double-sided assembled modules supported
- Supports NVM Express (NVMe)
- Data transfer rate up to 40 Gbps
- LED indicator for power and access
- Metal housing
- Hot Plug, Plug & Play
- Dimensions (LxWxH): ca. 107 x 47 x 24 mm

System requirements

- Linux Kernel 6.2 or above

- Mac OS 12.4 or above
- Windows 10/10-64/11
- iPad Air (4th Generation) or above
- iPad Pro (3rd Generation) or above
- Surface Pro 7
- Device with a free USB Type-C™ port or with a free Thunderbolt™ 3 port or
- Device with a free Thunderbolt™ 4 port

Package content

- External enclosure M.2
- Cable USB-C™ male to USB-C™ male, length ca. 15 cm
- 1 x thermal conductive pad
- 1 x heat sink
- M.2 mounting material
- Screwdriver
- User manual

Images



General

Supported operating system:	Surface Pro 7 Windows 10 32-Bit Windows 10 64-Bit iPad Pro (3rd Generation) or above iPad Air (4th Generation) or above Windows 11 Mac OS 12.4 oder höher Linux Kernel 6.2 or above
Supported module:	M.2 modules in format 2280, 2260 and 2242 with key M or key B+M based on PCIe
Maximum height of the components on the module:	1.5 mm application of double-sided assembled modules supported

Interface

External:	1 x USB 40 Gbps USB Type-C™ female
Internal:	1 x M.2 key M slot

Technical characteristics

Chipset:	Asmedia ASM2464PD
Data transfer rate:	40 Gbps

Physical characteristics

Housing material:	Aluminium
Length:	107 mm
Width:	47 mm
Height:	24 mm
Colour:	grey