

10" Patch Panel 12 Port Cat.6 black

Description

This Patch Panel by Delock can be mounted in a 10" rack. At the LSA blocks you can install up to 12 network cables with a punch down tool.



Item no. 43297

EAN: 4043619432974

Country of origin: China

Package: White Box

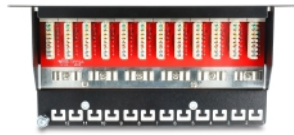
Technical details

- Connectors:
 - external: 12 x RJ45 jack
 - internal: LSA block
- For mounting in 10" racks, 1 U
- Cable routing 180°
- Shielded (Cat.6)
- Compliant with Cat.6 Class E requirements of ISO/IEC 11801, EN 50173, Cat.6 of ANSI/TIA 568 B.2-1
- TIA-568A/B pinout
- Cable diameter up to 0.644 mm (22 ~ 26 AWG)
- For solid or stranded wire
- Metal housing
- Colour: jet black RAL 9005
- Dimensions (LxWxH): ca. 254 x 109 x 44 mm

Package content

- 10" Patch Panel
- Cable ties

Images



General

Unit height:	1
Mounting type:	10 in
Specification:	Cat. 6

Interface

Connector:	12 x RJ45 jack
------------	----------------

Physical characteristics

Housing colour:	black
Housing material:	metal
Length:	254 mm
Width:	109 mm
Height:	44 mm

Manufacturer information

Street Beeskowdamm 13/15
 Postal code 14167
 City Berlin
 Country Deutschland
 E-Mail info@delock.de
 Website www.delock.de

