

# Delock Keystone Patch Panel 8 Port grey

## Description

This patch panel by Delock can be used as a junction box on the wall or in enclosures. Additionally, clips for DIN rail mounting are included. With its standardized dimensions, it is suitable for easy snap-in mounting of 8 Keystone modules.



## Note

Due to the narrow design only Keystone modules up to max. 18.0 mm width can be used.

**Item no. 43412**

EAN: 4043619434121

Country of origin: China

Package: White Box

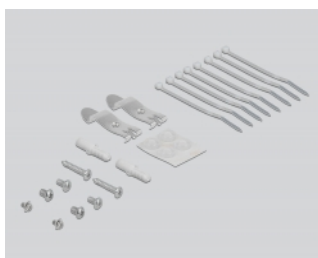
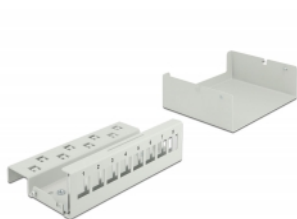
## Specification

- 8 Keystone ports 19.2 x 14.9 mm
- Cable routing 180°
- Shielded
- Metal housing
- Colour: grey
- Dimensions (LxWxH): ca. 158.5 x 112.5 x 45.2 mm

## Package content

- Keystone patch panel
- 2 DIN-rail clips
- 2 screws
- 8 zip-tie

## Images



## General

Mounting type:	wall DIN rail
----------------	------------------

## Physical characteristics

Housing colour:	grey
Housing material:	metal
Length:	158.5 mm
Width:	112.5 mm
Height:	45.2 mm