

Delock Keystone Patch Panel 12 Port black

Description

This patch panel by Delock can be used as a junction box on the wall or in enclosures. Additionally, clips for DIN rail mounting are included. With its standardized dimensions, it is suitable for easy snap-in mounting of 12 Keystone modules.



Note

Due to the narrow design only Keystone modules up to max. 18.0 mm width can be used.

Item no. 43415

EAN: 4043619434152

Country of origin: China

Package: Box

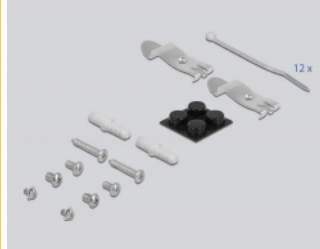
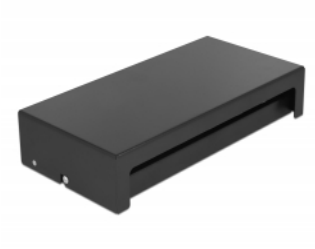
Technical details

- 12 Keystone ports 19.2 x 14.9 mm
- Cable routing 180°
- Shielded
- Metal housing
- Colour: black
- Dimensions (LxWxH): ca. 232.0 x 112.5 x 45.2 mm

Package content

- Keystone patch panel
- 2 DIN-rail clips
- 2 screws
- 12 zip-tie

Images



General

Mounting type:	wall DIN rail
----------------	------------------

Physical characteristics

Housing colour:	black
Housing material:	metal
Length:	232 mm
Width:	112.5 mm
Height:	45.2 mm

Herstellerinformation

Strasse	Beeskowdamm 13/15
PLZ	14167
Ort	Berlin
Land	Deutschland
E-Mail	info@delock.de
Webseite	www.delock.de