

3.5" Mobile Rack for 2 x M.2 NVMe SSD with Slim SAS SFF-8654 connector

Description

This solid metal mobile rack by Delock can be installed into a **3.5" bay** of a PC and provides **two M.2 slots** in 2280, 2260, 2242 or 2230 format.

Quick change of SSD

Due to the special mechanism, the **SSD can be exchanged quickly and easily**. For example, data backups can be taken and stored in a safe place.

Tray with key lock and springs

The mobile rack is equipped with a **key lock** to prevent unauthorised access. The stable carrier of metal has springs on the top and bottom which **reduce vibrations** and therefore support its use in mobile devices.

Please Note

Special care must be taken that the tray is fully inserted, otherwise no connection to the SSD can be established.



Item no. 47117

EAN: 4043619471171

Country of origin: China

Package: Box

Technical details

- Connectors:
 - Mobile Rack:
 - internal:
 - 2 x M.2 key M slot
 - external:
 - 2 x Slim SAS SFF-8654 4i female
 - 2 x 4 pin Floppy male
 - 2 x 2 pin pin header for fan
 - M.2 tray:
 - 1 x M.2 key M male
 - 1 x M.2 key M slot
- Compatible to PCI Express V4.0
- Interface: PCIe / NVMe
- Supports M.2 modules in format 2280, 2260, 2242 and 2230 with key M or key B+M based on PCIe
- Maximum height of the components on the module: 1.5 mm, application of double-sided assembled modules supported
- 1 x fan
- 2 x LED indicator

- Bootable, ex UEFI version 2.3.1
- M.2 tray made of metal
- Supports NVM Express (NVMe)
- Supports S.M.A.R.T.
- Key lock
- Dimensions (LxWxH): ca. 159 x 100 x 25 mm

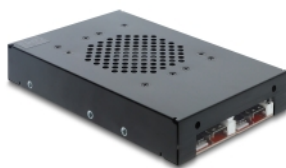
System requirements

- Linux Kernel 6.2 or above
- Windows 10/10-64/11
- Windows Server 2022
- PC with one free 3.5" bay
- A free Slim SAS SFF-8654 port for each M.2 slot
- Power supply with a free SATA power connector

Package content

- 3.5" Mobile Rack with 2 x M.2 tray
- Cable SATA 15 pin to 2 x 4 pin Floppy female, length ca. 12 cm
- 2 x keys
- 4 x screw I 6.0 x 5.0 mm, head 8.0 mm
- 2 x screw IM 2.0 x 4.0 mm, head 5.0 mm
- User manual

Images



General

Form factor:	3.5"
Supported operating system:	Windows 10 32-Bit Windows 10 64-Bit Windows 11 Windows Server 2022 Linux Kernel 6.2 or above

Interface

External:	2 x 4 pin Floppy male 2 x 2 pin pin header for fan 2 x Slim SAS SFF-8654 4i female
Internal:	2 x M.2 key M slot

Physical characteristics

Housing material:	metal
-------------------	-------

Manufacturer information

Street Beeskowdamm 13/15
 Postal code 14167
 City Berlin
 Country Deutschland
 E-Mail info@delock.de
 Website www.delock.de

