

# Delock 2.5" Converter SATA 22 pin > 2 x M.2 with RAID with Enclosure

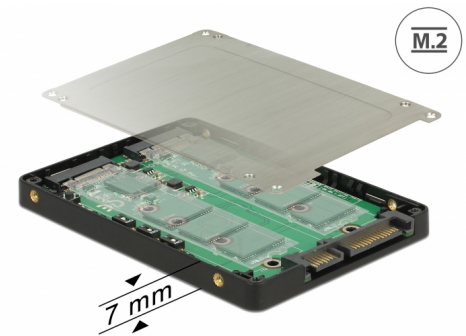
## Description

This Delock converter enables the connection of up to two M.2 SSD in 2280, 2260, 2242 or 2230 format which can be used as a 2.5" HDD. The converter can be installed into your system internally through a SATA 22 pin interface. When using more than one SSD, you have the possibility to use different RAID level.

## Note

This product provides a chipset-based RAID function. Management and setting of the RAID mode is not possible via the operating system or BIOS. Different diagnostic software is not compatible with this solution.

The SMART function is not supported. JBOD is only supported on SATA controllers with port multiplier function.



### Item no. 62791

EAN: 4043619627912

Country of origin: Taiwan,  
Republic of China

Package: Retail Box

## Specification

- Connectors:
  - 1 x SATA 6 Gb/s 22 pin plug >
  - 2 x 67 pin M.2 key B slot
- Interface: SATA
- Chipset: Asmedia ASM1092R
- Form factor: 2.5"
- Supports M.2 modules in format 2280, 2260, 2242 and 2230 with key B or key B+M based on SATA
- Maximum height of the components on the module: 1.25 mm, application of double-sided assembled modules supported
- Data transfer rate up to 6 Gb/s
- Supports RAID 0, 1, JBOD
- RAID mode set by DIP switch on board
- Maximum output current for each M.2 module: max. 3 A
- 1 x Reset button
- 2 x LED indicator
- Bootable

- Operating temperature: 0 °C ~ 70 °C
- Storage temperature: -40 °C ~ 85 °C
- Dimensions (LxWxH): ca. 100 x 70 x 8 mm

---

## System requirements

- Linux Kernel 3.16 or above
- Windows 7/7-64/8.1/8.1-64/10/10-64
- A free SATA 22 pin interface

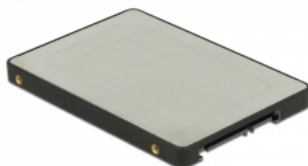
---

## Package content

- Converter
- Mounting material
- Screwdriver
- User manual

---

## Images



## General

Form factor:	2.5"
Function:	bootable
Supported operating system:	Linux Kernel 3.16 or above Windows 10 32-Bit Windows 10 64-Bit Windows 7 32-Bit Windows 7 64-Bit Windows 8.1 32-Bit Windows 8.1 64-Bit
Slot:	SATA
Supported module:	M.2 modules in format 2280, 2260, 2242 and 2230 with key B or key B+M based on SATA
Maximum height of the components on the module:	1.25 mm application of double-sided assembled modules supported

## Interface

Connector 1:	1 x SATA 6 Gb/s 22 pin plug
Connector 2:	2 x 67 pin M.2 key B slot

## Technical characteristics

Chipset:	Asmedia ASM1092R
Data transfer rate:	6 Gb/s
RAID function:	JBOD 0 1

## Physical characteristics

Length:	100 mm
Width:	70 mm
Height:	8 mm

Colour:	black silver
---------	-----------------

