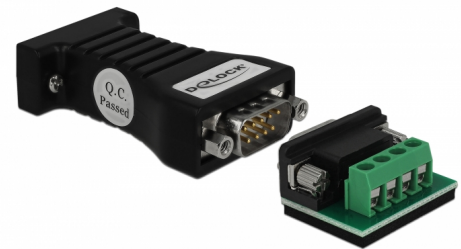


Delock Converter 1 x Serial RS-232 DB9 to 1 x Serial RS-485 with ESD protection 15 kV surge protection 600 W and extended temperature range

Description

This RS-232 to RS-485 converter by Delock is suitable for all serial devices, e.g. on machine controls, fieldbus systems, measuring instruments, computers, printers etc. The level converter can be used as a coupling directly between two DB9 connections without an additional power supply.



Item no. 62919

EAN: 4043619629190

Country of origin: China

Package: Box

Specification

- Connectors:
 - 1 x serial RS-232 DB9 female with screws
 - 1 x serial RS-485 DB9 male with nuts
 - 1 x RS-485 Terminal Block 4 pin
- Auto data flow control
- Plug & Play
- Supports Modbus
- Data transfer: asynchronous, half duplex
- Data transfer rate: 300 bps - 115.2 Kbps
- ±15 kV ESD protection for all serial signals
- Surge Protection: 600 W peak pulse (TVS)
- Housing material: plastic
- Colour: black
- Operating temperature: -40 °C ~ 80 °C
- Relative humidity: 5 - 95 % (non condensing)
- Dimensions (LxWxH):
 - Converter: ca. 63 x 33 x 17 mm

- Terminal block: ca. 32 x 31 x 16 mm
- Bus Power from RS-232: TXD, RTS or DTR
 - No external power supply needed

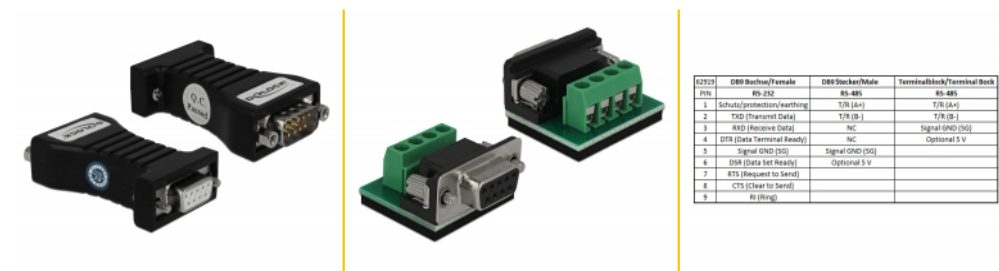
System requirements

- Device with a free RS-232 port

Package content

- Converter RS-232 to RS-485
- Terminal block adapter

Images



RS232	D9P Buchse/Female	D9P Stecker/Male	Terminalblock/Terminal Block
Pin	RS-232	RS-485	RS-485
1	Schutz/Protection/earthing	T/R (A+)	T/R (A+)
2	TXD (Transmit Data)	T/R (B-)	T/R (B-)
3	RXD (Receive Data)	NC	Signal GND (DG)
4	DTR (Data Terminal Ready)	NC	Optional 5 V
5	Signal GND (DG)	Signal GND (DG)	
6	DSR (Data Set Ready)	Optional 5 V	
7	RTS (Request to Send)		
8	CTS (Clear to Send)		
9	Ri (Ring)		

General

Function:	Plug & Play Auto RTS Control
Specification:	RS-232 (EIA / TIA) RS-422 / RS-485 (EIA / TIA)
Supported operating system:	OS independent, no driver installation necessary
Protection:	ESD (Electrostatic Discharge) Input overvoltage protection 600 W Peak Pulse Power

Interface

Connector 1:	1 x serial RS-232 DB9 female
Connector 2:	1 x Serial RS-485 DB9 male

Technical characteristics

Data transfer rate:	300 bps - 115.2 Kbps
Operating temperature:	-40 °C ~ 85 °C
Humidity:	5 ~ 95 %
Data transmission:	asynchronous Half duplex
Voltage:	RS-232 Bus Power TXD, RTS or DTR

Physical characteristics

Housing material:	Plastic
Pin finishing:	gold-plated
Screw type:	#4-40 UNC
Length:	63 mm
Width:	33 mm
Height:	17 mm

Overvoltage protection:	±15 kV ESD Human Body Model (HBM)
-------------------------	-----------------------------------

