

Delock SuperSpeed USB 5 Gbps Docking Station for 1 x 2.5" SATA HDD / SSD

Description

This Docking Station by Delock enables an external connection of one **2.5" SATA HDD or SSD** through the USB interface. This solution does not require an external enclosure since the drive can just plug in directly into the docking station.

Good cooling

The bottom consists of a **stable metal plate with cooling fins**. These provide a passive cooling for the inserted memory.



Item no. 63205

EAN: 4043619632053

Country of origin: China

Package: Retail Box

Specification

- Connectors:
 - 1 x SuperSpeed USB 5 Gbps (USB 3.2 Gen 1) USB Type-C™ female
 - 1 x SATA 6 Gb/s 22 pin receptacle
 - 1 x DC jack (optional for power supply)
- Chipset: Asmedia ASM225
- Function key: 1 x On / Off switch
- Suitable for 2.5" SATA HDD / SSD
 - HDD height up to 15 mm
- Suitable for all SATA HDDs up to SATA 6 Gb/s
- Data transfer rate up to 5 Gbps
- LED indicator for power and access
- Supports S.M.A.R.T.
- Supports TRIM
- Supports UASP
- Plug & Play
- Bootable
- Colour: black
- Dimensions (LxWxH): ca. 138 x 80 x 23 mm

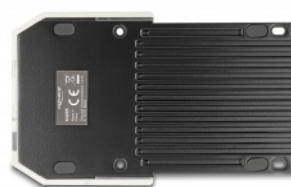
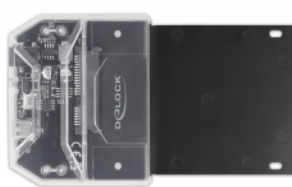
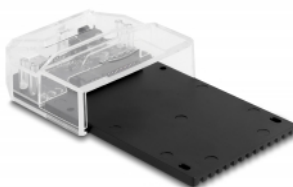
System requirements

- Android 10.0 or above
- Chrome OS
- Linux Kernel 5.11 or above
- Mac OS 11.2.3 or above
- Windows 8.1/8.1-64/10/10-64/11
- PC or laptop with a free USB Type-A port

Package content

- Docking station
- Cable USB-C™ male to USB Type-A male, length ca. 80 cm
- Screws
- User manual

Images



General

Function:	Plug & Play bootable TRIM S.M.A.R.T.
Suitable for data medium:	2.5"
Supported operating system:	Chrome OS Windows 10 32-Bit Windows 10 64-Bit Windows 8.1 32-Bit Windows 8.1 64-Bit Android 10.0 or above Mac OS 11.2.3 or above Windows 11 Linux Kernel 5.11 or above

Interface

External:	1 x DC jack 5.5 x 2.1 mm 1 x USB 5 Gbps USB Type-C™ female
Internal:	1 x SATA 6 Gb/s 22 pin receptacle

Technical characteristics

Chipset:	Asmedia ASM225
----------	----------------

Physical characteristics

Length:	138 mm
Width:	80 mm
Height:	23 mm