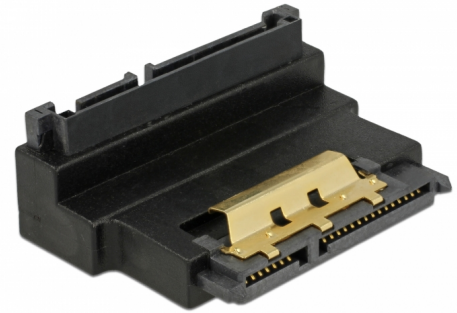


Delock Adapter SATA 22 pin receptacle with latch to plug - angled up

Description

This SATA 22 pin adapter by Delock enables to lead the male port of the SATA devices, e.g. hard disk drives etc. 90° up. Thus it can connect the SATA 22 pin cable without any problem in case the existing SATA male is difficult to access.



Item no. 63944

EAN: 4043619639441

Country of origin: China

Package: Zip poly bag

Specification

- Connectors:
 - 1 x SATA 22 pin receptacle with latchtype >
 - 1 x SATA 22 pin plug
- Data transfer rate up to 6 Gb/s
- Contacts gold-plated
- Colour: black
- Dimensions (LxWxH): ca. 4.8 x 3.5 x 1.8 cm

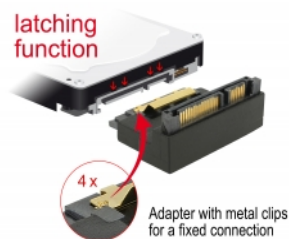
System requirements

- A free SATA 22 pin interface

Package content

- SATA 22 pin adapter

Images



Interface

connector:	1 x SATA 22 pin plug
Connector 1:	1 x SATA 22 pin receptacle

Physical characteristics

Pin finishing:	gold-plated
Length:	3,5 cm
Width:	4,8 cm
Height:	1,8 cm
Colour:	black