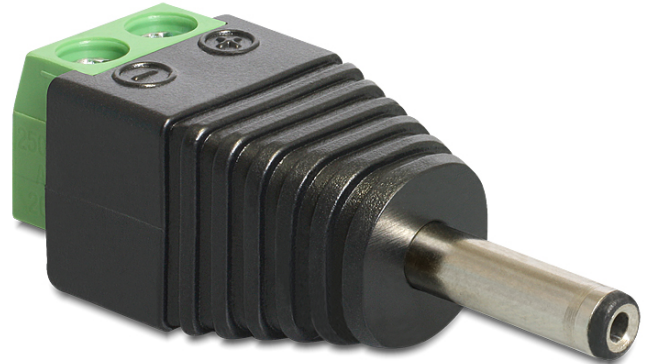


Delock Adapter DC 3.5 x 1.35 mm male > Terminal Block 2 pin

Description

This terminal block adapter by Delock can be used to connect bare wires. Thus the adapter is not only convenient for special industry applications, but also for the hobby area, e.g. railway modelling. Various devices with a suitable DC power connector can be connected to the adapter and are supplied with power individually (depending on the requirements of the device).



Specification

- 1 x DC 3.5 x 1.35 mm male
- 1 x 2 pin terminal block
- Positive pole inside, negative pole outside
- DC pin length: ca. 11 mm
- Pitch: 5.00 mm

Package content

- Adapter

Item no. 65434

EAN: 4043619654345

Country of origin: China

Package: • Zip poly bag