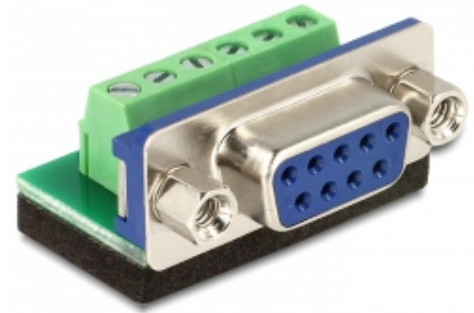


Terminal block > D-Sub 9 pin female

Description

This Serial to Terminal Block adapter is made for special industrial application e.g. for connecting single wires with open cable heads.



Item no. 65498

EAN: 4043619654987

Country of origin: China

Package: Zip poly bag

Technical details

- Connector:
 - Serial D-Sub 9 pin female
 - 6 pin Terminal Block
- Bottom side with isolating, antislip pad
- Pitch: 3.81 mm
- Dimension (LxWxH): ca. 32 x 22.5 x 11 mm

System requirements

- One free D-Sub 9 pin male port

Package content

- Adapter

Images



Interface

Connector 1:	1 x serial D-Sub 9 pin female
Connector 2:	1 x 6 Pin Terminal Block

Physical characteristics

Pitch distance:	3.81 mm
Length:	31 mm
Width:	22.5 mm
Height:	11 mm

Manufacturer information

Street Beeskowdamm 13/15
 Postal code 14167
 City Berlin
 Country Deutschland
 E-Mail info@delock.de
 Website www.delock.de

