

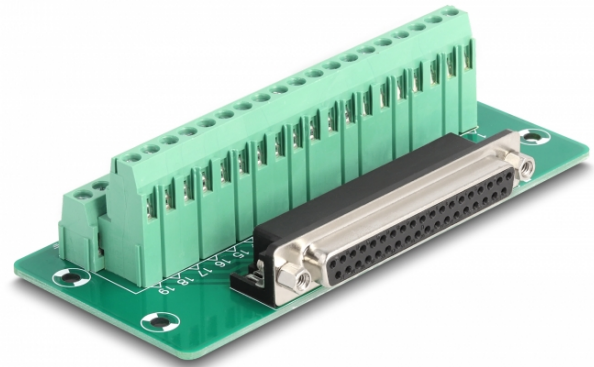
Delock D-Sub 37 pin female to Terminal Block for DIN rail

Description

This terminal block adapter by Delock can be used to connect wires with stripped ends.

DIN rail mounting

With the clips included in the delivery content, the adapter can be attached to a 15 mm or 35 mm wide DIN rail.



Specification

- Connectors:
 - 1 x D-Sub 37 pin female
 - 1 x 38 pin terminal block
- Pin assignment: 1:1
- Pitch: 5.00 mm
- Useable for a cable gauge from 24 to 12 AWG
- DIN rail mounting: 15 mm and 35 mm
- Operating temperature: -40 °C ~ 100 °C
- Dimensions (LxWxH): ca. 116 x 51 x 30 mm

System requirements

- A free D-Sub 37 pin male
- 15 mm or 35 mm DIN rail

Package content

- Adapter
- 2 x DIN rail clip
- 5 x screws

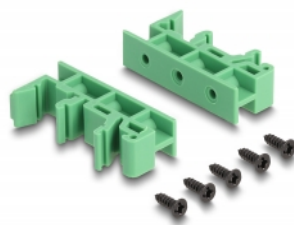
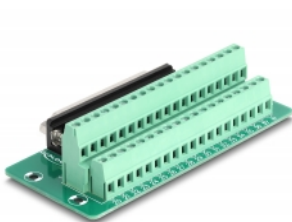
Item no. 66914

EAN: 4043619669141

Country of origin: China

Package: White Box

Images



General	
Mounting type:	DIN rail mounting: 15 mm and 35 mm
Interface	
Connector 1:	1 x D-Sub 37 pin female
Connector 2:	1 x 38 pin terminal block
Technical characteristics	
Operating temperature:	-40 °C ~ 100 °C
Physical characteristics	
Pitch distance:	5.00 mm
Conductor gauge:	24 to 12 AWG
Length:	116 mm
Width:	51 mm
Height:	30 mm