

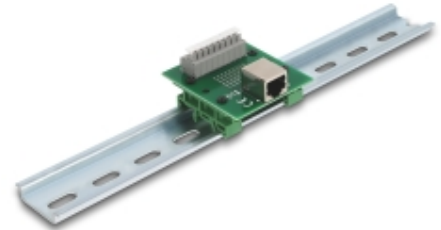
# RJ45 female to Terminal Block with push-button for DIN rail

## Description

This adapter by Delock can be used to connect various network devices. Strands with stripped ends can be connected via the terminal block toolfree.

### DIN rail mounting

With the clips included in the delivery content, the adapter can be attached to a 15 mm or 35 mm wide DIN rail.



**Item no. 66992**

EAN: 4043619669929

Country of origin: China

Package: Box

## Technical details

- Connectors:
  - 1 x RJ45 jack
  - 1 x 9 pin terminal block
- Pin assignment: 1:1
- Pitch: 3.81 mm
- Useable for a cable gauge from 24 to 12 AWG
- DIN rail mounting: 15 mm and 35 mm
- Operating temperature: -40 °C ~ 100 °C
- Dimensions (LxWxH): ca. 60 x 53 x 18 mm

## System requirements

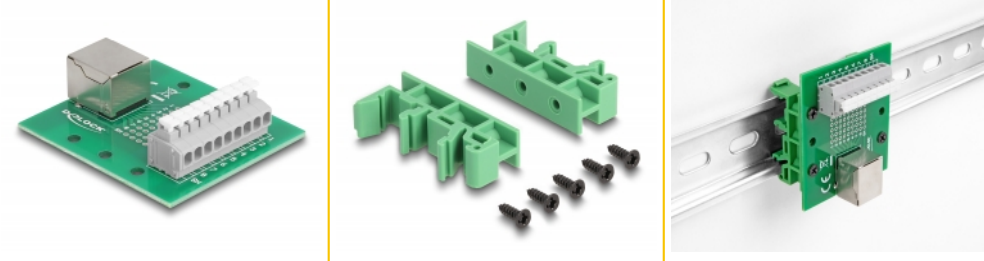
- A free RJ45 plug
- 15 mm or 35 mm DIN rail

## Package content

- Adapter

- 2 x DIN rail clip
- 5 x screws

## Images



## General

Mounting type:	DIN rail mounting: 15 mm and 35 mm
----------------	------------------------------------

## Interface

Connector 1:	1 x RJ45 jack
Connector 2:	1 x 9 pin terminal block

## Technical characteristics

Operating temperature:	-40 °C ~ 100 °C
------------------------	-----------------

## Physical characteristics

Pitch distance:	3.81 mm
Cable gauge:	24 to 12 AWG
Length:	60 mm
Width:	53 mm
Height:	18 mm

## Manufacturer information

Street	Beeskowdamm 13/15
Postal code	14167
City	Berlin
Country	Deutschland
E-Mail	info@delock.de
Website	www.delock.de

