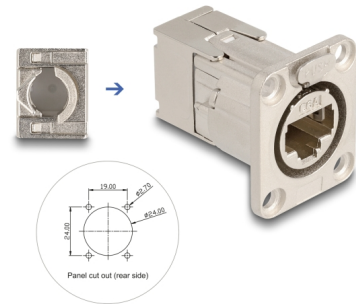


Delock D-Type RJ45 built-in connector with LSA connection Cat.6A STP metal

Description

This RJ45 built-in connector with D-shaped metal flange by Delock can be used for panel mounting and for installation in a housing.



Item no. 67064

EAN: 4043619670642

Country of origin: China

Package: Poly bag

Special features

- Countersink for cylinder screws

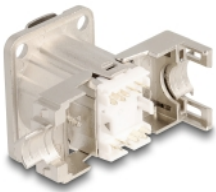
Technical details

- Connectors:
 - 1 x RJ45 jack
 - 1 x LSA
- Cat.6A specification
- For D-type ports with 24 x 19 mm
- Panel cut-out (diameter): ca. 24 mm
- Four mounting holes for screw fastening
- For solid or stranded wire (26 - 22 AWG)
- TIA-568A/B pinout
- Shielded (STP)
- Operating temperature: -10 °C ~ 60 °C
- Material: metal
- Colour: silver
- Dimensions (LxWxH): ca. 43.1 x 32.6 x 27.6 mm

Package content

- D-Type module
- Cable manager
- Zip-tie
- 4 x screw
- 4 x washer

Images



General

Specification:	Cat. 6A
----------------	---------

Interface

Connector 1:	1 x RJ45 jack
Connector 2:	1 x LSA

Technical characteristics

Operating temperature:	-10 °C ~ 60 °C
------------------------	----------------

Physical characteristics

Material:	metal
Shielding:	STP
Length:	43.1 mm
Width:	32.6 mm
Height:	27.6 mm
Colour:	silver

Herstellerinformation

Strasse	Beeskowdamm 13/15
PLZ	14167
Ort	Berlin
Land	Deutschland
E-Mail	info@delock.de
Webseite	www.delock.de