

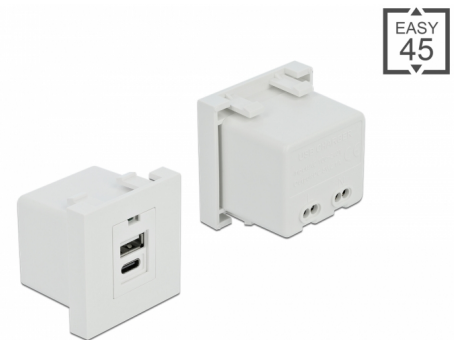
# Delock Easy 45 USB Charging Port Module 1 x Type-A + 1 x USB Type-C™

## Description

This Easy 45 charging port module by Delock provide one USB Type-A and one USB Type-C™ charging port. The simple snap-in mechanism ensures that the module is firmly in place and can be easily removed if necessary.

### Easy 45 connects

Easy 45 is a variable, modular system that allows components such as sockets, HDMI or USB connections to be added according to your needs. The Easy 45 modules are standardised and can be mounted in various module holder or cable ducts. Easy 45 builds the interface between electrical, network and system installation and many peripheral devices such as TV, monitors, printers, laptops and much more.



**Item no. 81313**

EAN: 4043619813131

Country of origin: China

Package: Box

## Specification

- Connectors:
  - 1 x USB Type-A female
  - 1 x USB Type-C™ female
  - 1 x 2 pin terminal block N, L
- Input: AC 100 ~ 240 V / 50 ~ 60 Hz / 0.2 A
- USB output: max. 5.0 V / 2.1 A total
- Output power: max. 10.5 W total
- Average active efficiency 81.40 %
- Efficiency at low load (10 %) 73.50 %
- No-load power consumption 0.166 W
- Short circuit protection
- LED indicator for power
- Material: PC plastic
- Suitable for module holder Delock Easy 45
- Suitable for 45 mm cable duct with minimum depth 45 mm
- Module size: 45 x 45 mm
- Dimensions (LxWxH): ca. 45 x 45 x 38 mm
- Colour: white

---

## System requirements

- A free module port Delock Easy 45

---

## Package content

- Charging port module

## General

Mounting type:	Easy 45
----------------	---------

## Interface

Connector 1:	1 x 2 pin terminal block screw terminal
Connector 2:	1 x USB Type-A female 1 x USB Type-C™ female

## Physical characteristics

Length:	45 mm
Width:	45 mm
Height:	38 mm
Colour:	RAL 9003 Weiß