

# Easy 45 Grounded Power Socket with a 45° arrangement 45 x 45 mm 10 pieces

## Description

This power socket by Delock is designed to provide a CEE 7/3 power connection. The simple snap-in mechanism ensures that the module is firmly in place and can be easily removed if necessary.



10 x

**Item no. 81321**

EAN: 4043619813216

Country of origin: China

Package: Box

## Technical details

- Connectors:
  - 1 x socket CEE 7/3
  - 3 x screwless terminal for PE, N, L
- Rated current: 16 A / 250 V~
- Rated power: 4000 W
- Sockets in a 45° arrangement
- Material: ABS / PC plastic
- Suitable for module holder Delock Easy 45
- Suitable for 45 mm cable duct with minimum depth 45 mm
- Module size: 45 x 45 mm
- Dimensions (LxWxH): ca. 45 x 45 x 39 mm
- Colour: white

## System requirements

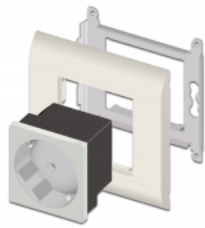
- Mains supply with grounding
- A free module port Delock Easy 45 (45 x 45 mm)

## Package content

- 10 x Easy 45 Grounded Power Socket 45 x 45 mm
- User manual

---

## Images



### Interface

|              |   |
|--------------|---|
| Connector 1: | 1 x 3 Pin Terminalblock Steckklemme           |
| Connector 2: | 1 x power socket CEE 7/3 with childproof lock |

### Physical characteristics

|         |               |
|---------|---------------|
| Length: | 45 mm         |
| Width:  | 45 mm         |
| Height: | 39 mm         |
| Colour: | RAL 9003 Weiß |

### Manufacturer information

Street                      Beeskowdamm 13/15  
 Postal code                14167  
 City                         Berlin  
 Country                    Deutschland  
 E-Mail                      info@delock.de  
 Website                    www.delock.de

