

# Delock Easy 45 Module Network RJ45 Cat.6A, 45 x 45 mm

## Description

This Easy 45 module by Delock provides a network connection. This port can be used to connect different networking devices, e.g. a laptop to an existing network. The simple snap-in mechanism ensures that the cover is firmly in place and can be easily and toolless changed if necessary.

## Easy 45 connects

Easy 45 is a variable, modular system that allows components such as sockets, HDMI or USB connections to be added according to your needs. The Easy 45 modules are standardised and can be mounted in various module holder or cable ducts. Easy 45 builds the interface between electrical, network and system installation and many peripheral devices such as TV, monitors, printers, laptops and much more.



RJ45

**Item no. 81411**

EAN: 4043619814114

Country of origin: China

Package: Zip poly bag

## Specification

- Connectors: 2 x RJ45 jack
- 1:1 connected
- Cat.6A specification
- Shielded (STP)
- Data transfer rate up to 10/100/1000 Mbps
- With sealing cap
- Material: plastic
- Suitable for module holder Delock Easy 45
- Suitable for 45 mm cable duct with minimum depth 45 mm
- Module size: 45 x 45 mm
- Dimensions (LxWxH): ca. 45.0 x 45.0 x 40.0 mm
- Colour: black

## System requirements

- A free module port Delock Easy 45

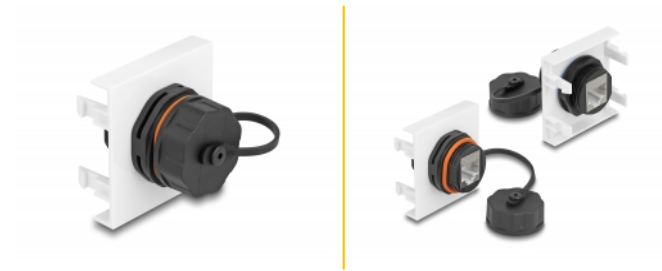
---

## Package content

- Easy 45 module

---

## Images



### General

Specification:	Cat. 6A
----------------	---------

### Interface

Connector 1:	1 x RJ45 jack
Connector 2:	1 x RJ45 jack

### Physical characteristics

Connector color:	black
Material:	plastic
Shielding:	STP
Length:	40.0 mm
Width:	45.0 mm
Height:	45,0
Colour:	RAL 9003 Weiß