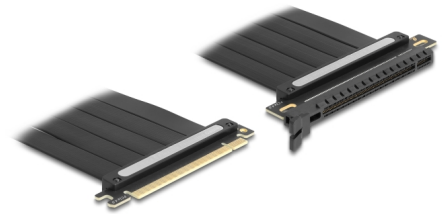


# Delock Riser Card PCI Express 4.0 x16 male to x16 slot with cable 30 cm

## Description

This PCI Express riser card by Delock is used to connect a **PCI Express x16 card**. The flexible cable allows a space-saving installation inside the computer case.



30 cm

**Item no. 81508**

EAN: 4043619815081

Country of origin: China

Package: Box

## Technical details

- Connectors:
  - 1 x PCI Express x16 male
  - 1 x PCI Express x16 slot
- Supports PCI Express 4.0 protocol
- Cable gauge: 28 AWG
- Colour: black
- OS independent, no driver installation necessary
- Cable length: ca. 30 cm

## System requirements

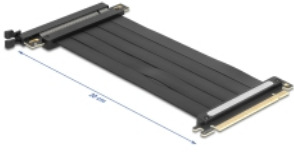
- PC with one free PCI Express x16 / x32 slot

## Package content

- PCIe riser card

---

## Images



## General

Specification:	PCI Express 4.0
Style:	Flat cable

## Interface

Connector 1:	1 x PCI Express x16 male
Connector 2:	1 x PCI Express x16 slot

## Physical characteristics

Cable length:	30 cm
Colour:	black

## Herstellerinformation

---

Strasse	Beeskowdamm 13/15
PLZ	14167
Ort	Berlin
Land	Deutschland
E-Mail	info@delock.de
Webseite	www.delock.de