

# Delock Fiber Optic Distribution Box for DIN rail 8 port grey

## Description

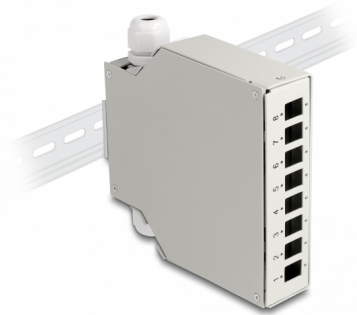
This fiber optic distribution box by Delock is suitable for mounting on a 35 mm wide DIN rail and can accommodate up to 8 fiber optic couplers of the types SC Simplex or LC Duplex.

### PG cable glands for feeding through fiber optic cables

The fiber optic cables can be fed through two waterproof PG11 cable glands.

### With splice cassette

The integrated splice tray enables clean routing of the individual fibers for optimal transmission of lightwave signals. In addition, the cassette is perfect for mechanical splicing and fusion splicing.



**Item no. 85931**

EAN: 4043619859313

Country of origin: China

Package: Box

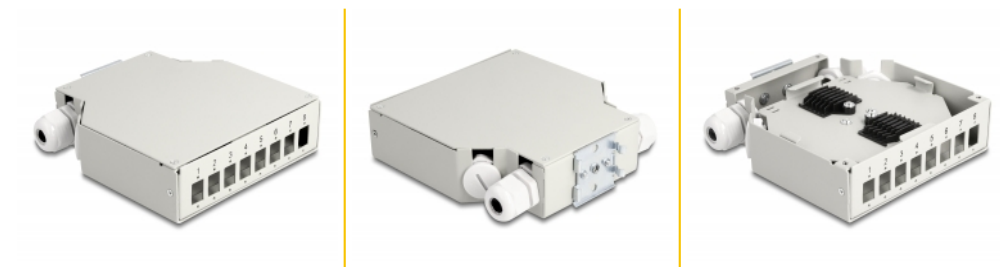
## Specification

- 8 slots for SC Simplex or LC Duplex couplings
- DIN rail mounting: 35 mm
- Rectangular cut-out 13.0 x 9.6 mm
- Mounting hole diameter: ca. 1.6 mm
- Pitch of screw hole: ca. 18 mm
- With splice cassette
- PG11 cable glands and sealing plugs
- Environmental temperature: -40 °C ~ 85 °C
- Housing colour: grey
- Housing material: metal
- Dimensions (LxWxH): ca. 137 x 126 x 35 mm

## Package content

- Fiber optic distribution box

## Images



## General

Mounting type:	DIN rail mounting: 35 mm
----------------	--------------------------

## Technical characteristics

Storage temperature:	-40 °C ~ 85 °C
----------------------	----------------

## Physical characteristics

Housing colour:	grey
Housing material:	metal
Length:	137 mm
Width:	126 mm
Height:	35 mm