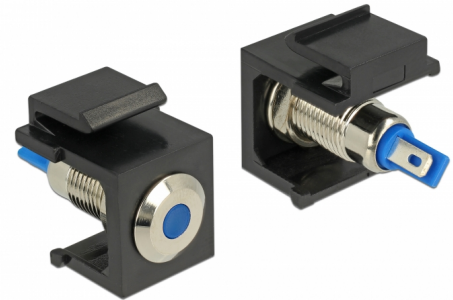


Delock Keystone LED blue 6 V flat, black

Description

This Keystone LED by Delock can be installed in e.g. a housing or device, to indicate different operating states.

With its standardised dimensions it can be used for easy snap-in mounting in e.g. a Keystone patch panel, face plate or surface-mount box.



Item no. 86461

EAN: 4043619864614

Country of origin: Taiwan,
Republic of China

Package: Zip poly bag

Specification

- Connectors:
internal: 2 x solder connection
- Operating voltage / current: 6 V DC / 30 mA
- For Keystone ports with 19.2 x 14.9 mm
- LED colour: blue
- Length in front of the panel: ca. 1.5 mm
- Housing colour: black
- Dimensions (LxWxH): ca. 27.3 x 16.3 x 22.3 mm

Package content

- Keystone LED

General

| | |
|----------------|-----------------|
| Mounting type: | Keystone module |
|----------------|-----------------|

Interface

| | |
|-----------|-----------------------|
| Internal: | 2 x solder connection |
|-----------|-----------------------|

Technical characteristics

| | |
|--------------------|----------------|
| Operating voltage: | 6 V DC / 30 mA |
|--------------------|----------------|

Physical characteristics

| | |
|-----------------|---------|
| Housing colour: | black |
| Length: | 27.3 mm |
| Width: | 16.3 mm |
| Height: | 22.3 mm |
| LED colour: | blue |