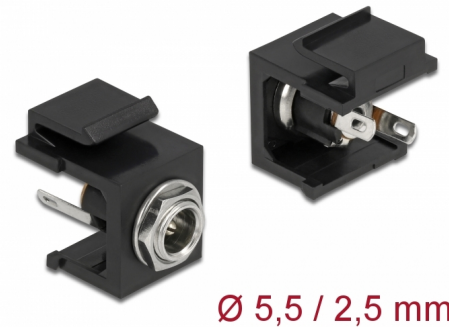


Delock Keystone Module DC 5.5 x 2.5 mm female black

Description

This DC female bulkhead by Delock can be installed or cabled in a housing or a device in order to supply it with power. With its standardised dimensions it can be used for easy snap-in mounting in e.g. a Keystone patch panel, face plate or surface-mount box.



Item no. 86850

EAN: 4043619868506

Country of origin: Taiwan,
Republic of China

Package: Zip poly bag

Specification

- Connectors:
external: 1 x DC 5.5 x 2.5 mm female
internal: 3 x solder connection
- Power rating: 30 V / 3 A
- For Keystone ports with 19.2 x 14.9 mm
- Colour: black
- Length in front of the panel: ca. 3.5 mm
- Dimensions (LxWxH): ca. 20.7 x 16.3 x 22.0 mm

Package content

- Keystone module

General

Mounting type:	Keystone module
----------------	-----------------

Interface

External:	1 x DC jack 5.5 x 2.5 mm
Internal:	3 x solder connector for cable

Physical characteristics

Housing colour:	black
Length:	22.0 mm
Width:	20.7 mm
Height:	16.3 mm