

# Delock Desktop Patch Panel 8 Port Cat.6A grey

## Description

This patch panel by Delock can be mounted e.g. on a wall. At the LSA blocks you can install up to eight network cables with a punch down tool.



**Item no. 87289**

EAN: 4043619872893

Country of origin: China

Package: Box

## Specification

- Connectors:  
external: 8 x RJ45 jack  
internal: LSA blocks
- Wall mounting
- Shielded
- Cat.6A
- TIA-568A/B pinout
- Cable diameter up to 0.644 mm (22 - 24 AWG)
- For solid or stranded wire
- Metal housing
- Colour: light grey RAL 7035
- Dimensions (WxHxD): ca. 160.3 x 44.2 x 108 mm

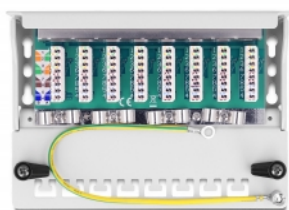
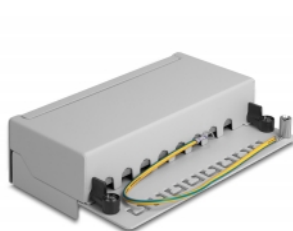
## System requirements

- Punch down tool

## Package content

- Patch Panel
- Installation manual
- 8 cable ties
- 2 wallmount screws

## Images



## General

|                               |             |
|-------------------------------|-------------|
| Suitable for conductor gauge: | 22 - 24 AWG |
| Mounting type:                | wall        |

## Interface

|           |               |
|-----------|---------------|
| External: | 8 x RJ45 jack |
| Internal: | 8 x LSA block |

## Technical characteristics

|           |        |
|-----------|--------|
| Category: | Cat.6A |
|-----------|--------|

## Physical characteristics

|                   |            |
|-------------------|------------|
| Housing colour:   | light grey |
| Housing material: | metal      |
| Depth:            | 108.0 mm   |
| Width:            | 160.3 mm   |
| Height:           | 44.2 mm    |