

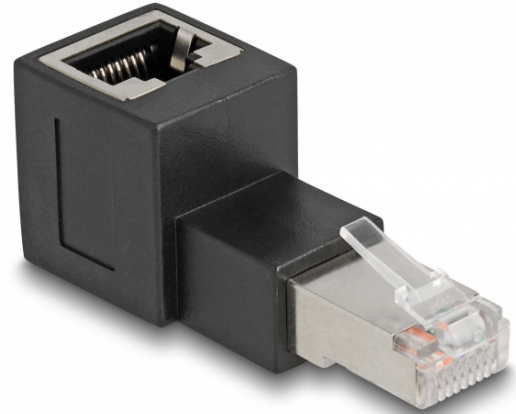
Delock RJ45 plug to RJ45 jack Adapter Cat.6A 90° upwards angled

Description

With this adapter by Delock the RJ45 jack of a device can be angled by 90°. This makes it easier to connect a network cable in hard to reach places and prevents damage to the device socket or cable breaks due to bending.

Multifunctional application

The RJ45 adapter can be used, for e.g. in network cabinets, patch panels, servers or switches.



Specification

- Connectors:
1 x RJ45 plug upwards angled
1 x RJ45 jack
- 1:1 connected
- Cat.6A specification
- Contacts gold-plated
- Dimensions (LxWxH): ca. 54.3 x 22.3 x 19.2 mm

System requirements

- A free RJ45 plug

Package content

- RJ45 adapter

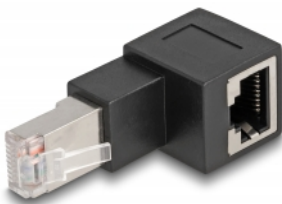
Item no. 87861

EAN: 4043619878611

Country of origin: China

Package: Zip poly bag

Images



General	
Specification:	Cat. 6A
Interface	
Connector 1:	1 x RJ45 plug upwards angled
Connector 2:	1 x RJ45 jack
Physical characteristics	
Length:	54.3 mm
Width:	22.3 mm
Height:	19.2 mm