

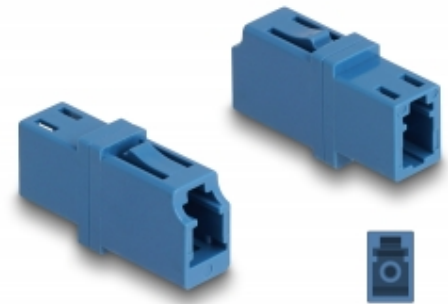
# Optical Fiber Coupler LC Simplex female to LC Simplex female UPC blue

## Description

With this LC Simplex coupling by Delock, optical fiber male connectors can be easily connected to each other. The coupling enables a direct connection to the optical fiber cable and is suitable for simple mounting in optical fiber connection boxes, cabinets and patch panels.

### Protection by dust cover

The coupling is equipped with an appropriate cap to protect the sleeve from dust and to keep it clean.



**Item no. 87985**

EAN: 4043619879854

Country of origin: China

Package: Zip poly bag

## Technical details

- Connectors:
  - 1 x LC Simplex female
  - 1 x LC Simplex female
- For single-mode fiber UPC
- ~~Operating temperature~~
- With dust cover
- Operating temperature: -40 °C ~ 85 °C
- Material: plastic
- Colour: blue
- Dimensions (LxWxH): ca. 25.7 x 13.3 x 9.5 mm

## System requirements

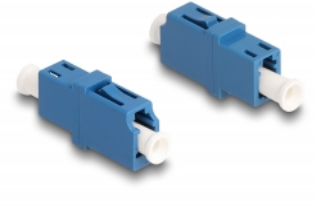
- A free LC Simplex male port

## Package content

- Optic fiber coupler

---

## Images



### General

Style:	both sides identical
--------	----------------------

### Interface

Connector 1:	1 x LC Simplex female
Connector 2:	1 x LC Simplex female

### Technical characteristics

Operating temperature:	-40 °C ~ 85 °C
------------------------	----------------

### Physical characteristics

Material:	Plastic
Length:	25.7 mm
Width:	13.3 mm
Height:	9.5 mm
Colour:	blue

### Manufacturer information

Street	Beeskowdamm 13/15
Postal code	14167
City	Berlin
Country	Deutschland
E-Mail	info@delock.de
Website	www.delock.de

