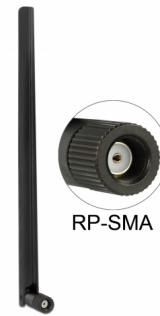


Delock WLAN Antenna RP-SMA 802.11 ac/a/h/b/g/n 3 ~ 6 dBi Omnidirectional Joint

Description

This Wireless LAN antenna can be connected to your device with RP-SMA interface, in order to send and receive signals.

Bluetooth



Item no. 88900

EAN: 4043619889006

Country of origin: Taiwan,
Republic of China

Package: Zip poly bag

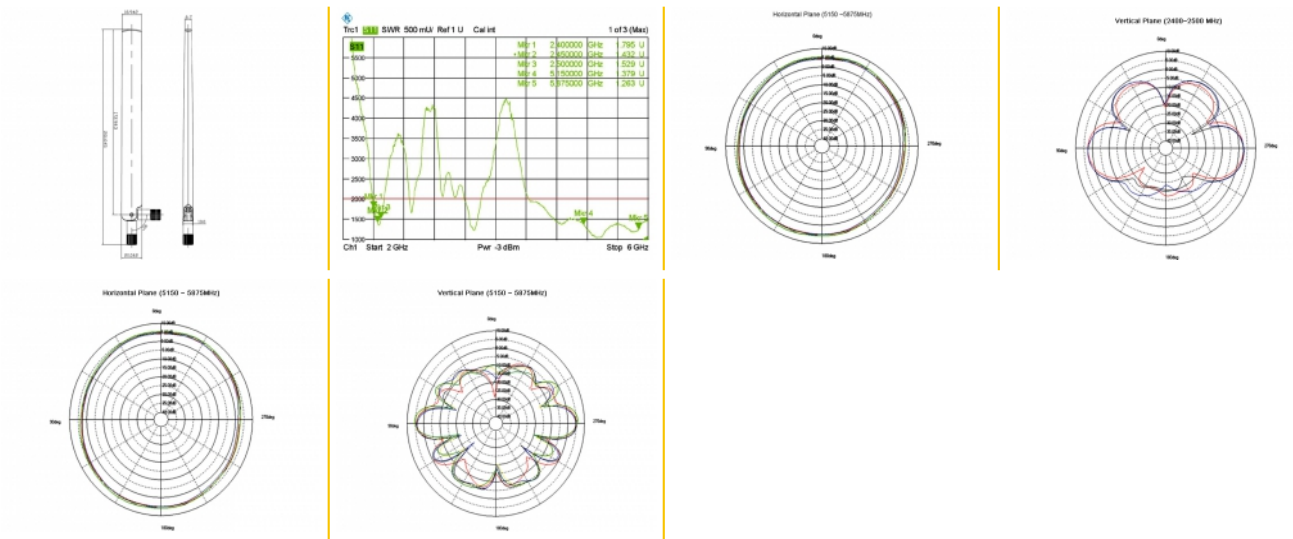
Technical details

- WLAN Antenna external with joint, rotatable
- RP-SMA plug
- Frequency range: 2.4000 ~ 2.4835 GHz,
5.1500 ~ 5.8750 GHz
- Gain: 3 ~ 6 dBi
- VSWR: 2.0 max.
- Impedance: 50 Ohm
- Operating temperature: -10°C ~ 55°C
- Length: 201.00 mm
- Width: 20.00 mm
- Ø: 11.00 mm (RP-SMA)

Package content

- Antenna

Images



Herstellerinformation

Strasse	Beeskowdamm 13/15
PLZ	14167
Ort	Berlin
Land	Deutschland
E-Mail	info@delock.de
Webseite	www.delock.de