

Delock WLAN 802.11 ac/a/h/b/g/n Antenna RP-SMA plug 5 - 7 dBi omnidirectional rotatable with tilt joint black

Description

This Wireless LAN antenna can be connected to a WLAN device with RP-SMA interface, in order to send and receive signals.



Specification

- Connector: RP-SMA plug
- Frequency range:
 - 2.400 - 2.500 GHz
 - 5.150 - 5.875 GHz
- Antenna gain:
 - 5 dBi @ 2.400 - 2.500 GHz
 - 7 dBi @ 5.150 - 5.875 GHz
- Impedance: 50 Ohm
- Polarisation: linear, vertical
- VSWR: 2.5
- Operating temperature: -10 °C ~ 55 °C
- Housing material: ABS
- Colour: black
- Length:
 - ca. 231.50 mm (with tilt joint)
 - ca. 199.20 mm (without tilt joint)
- Diameter:
 - ca. 19.70 mm (top)
 - ca. 21.50 mm (max.)
 - ca. 13.15 mm (RP-SMA)

System requirements

- Device with a free RP-SMA jack

Package content

- WLAN antenna

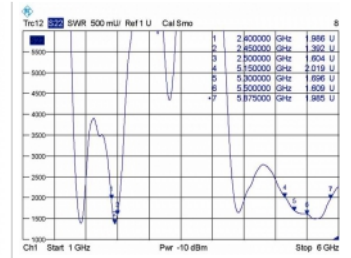
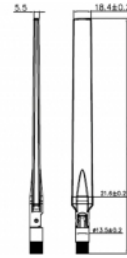
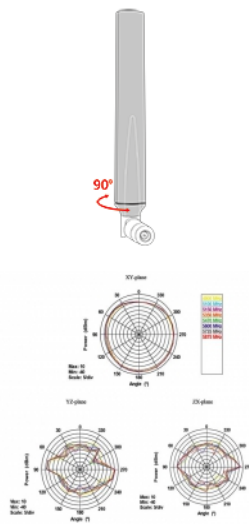
Item no. 88913

EAN: 4043619889136

Country of origin: Taiwan, Republic of China

Package: Retail Box

Images



Interface	
connector:	RP-SMA plug
Technical characteristics	
Frequency range:	2.400 GHz - 2.500 GHz 5.150 - 5.875 GHz
Gain:	5 dBi @ 2.400 - 2.500 GHz 7 dBi @ 5.150 - 5.875 GHz
Impedance:	50 Ω
Operating temperature:	-10 °C ~ 55 °C
Polarisation:	linear vertical
VSWR:	2.5
Physical characteristics	
Housing material:	ABS
Diameter connector:	13.50 mm 13.15 mm
Length with tilt joint:	231.50 mm
Length without tilt joint:	199.20 mm
Colour:	black