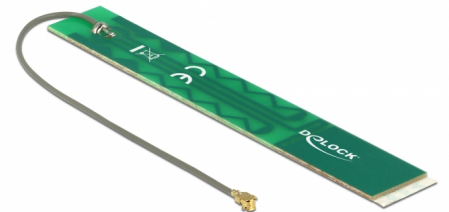


Delock LTE Antenna I-PEX Inc., MHF® I plug 2 - 3 dBi 1.13 10 cm PCB internal self adhesive

Description

This LTE antenna by Delock allows the usage of different LTE bands inside and outside. It is completely compatible to GSM, UMTS, LTE, LoRa, NB-IoT, ISM, Bluetooth, WLAN 2.4 GHz, ZigBee, DECT and Z-Wave.



10 cm

Item no. 88988

EAN: 4043619889884

Country of origin: Taiwan,
Republic of China

Package: Zip poly bag

Specification

- Connector: 1 x I-PEX Inc., MHF® I plug
- Frequency range:
690 - 960 MHz
1710 - 2700 MHz
- GSM, UMTS, LTE, ZigBee, Z-Wave, NB-IoT, WLAN 2,4 GHz, Bluetooth, ISM, DECT, LoRa
- Antenna gain: 2 - 3 dBi
- Impedance: 50 Ohm
- VSWR: 1.5
- Mounting type: self adhesive
- Operating temperature: -10 °C ~ 55 °C
- Cable type: coaxial
- Cable type: 1.13
- Cable colour: grey
- Cable diameter: ca. 1.13 mm
- Cable attenuation: 3.2 dB @ 2.4 GHz per meter
- Smallest bending radius: 4.5 mm
- Length incl. connectors (L): ca. 10 cm

- Dimensions (LxWxH): ca. 96.0 x 14.0 x 0.9 mm

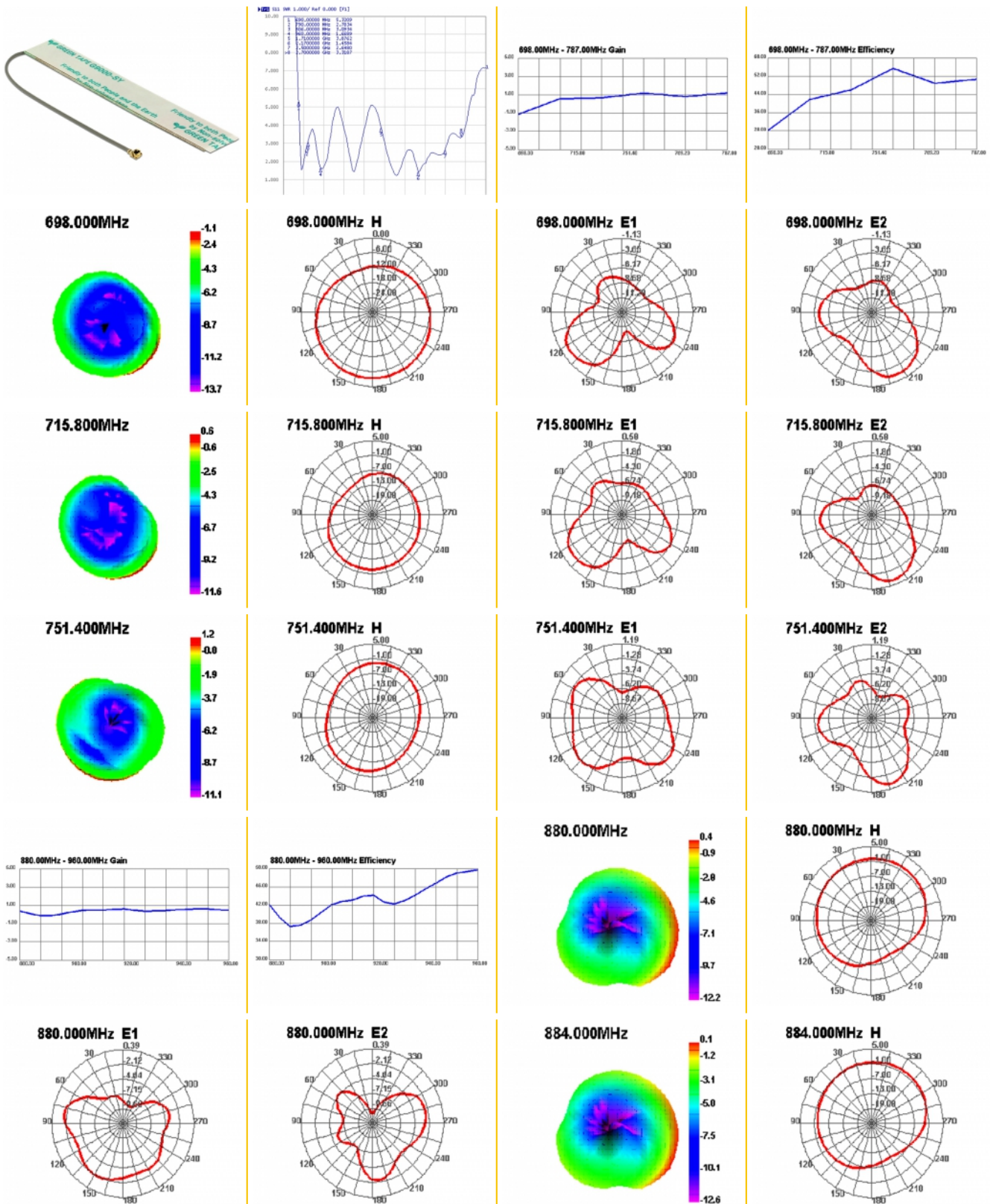
System requirements

- Device with one free I-PEX Inc., MHF® I port

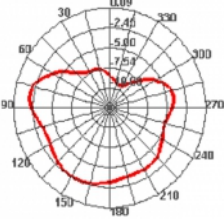
Package content

- Antenna

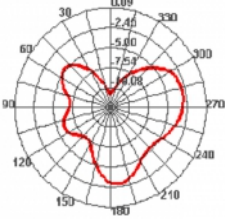
Images



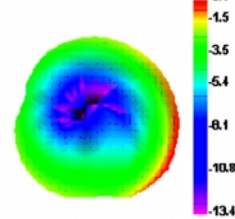
884.000MHz E1



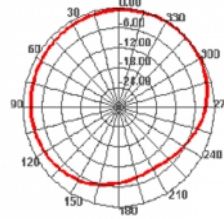
884.000MHz E2



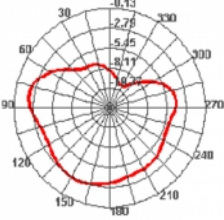
892.000MHz



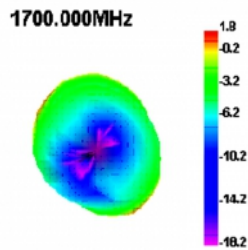
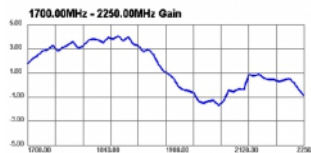
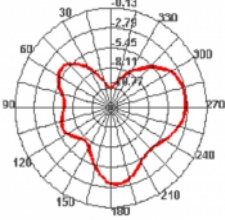
892.000MHz H



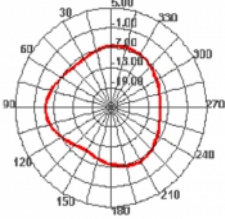
892.000MHz E1



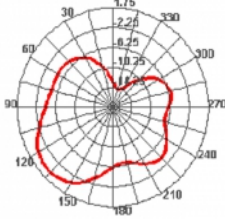
892.000MHz E2



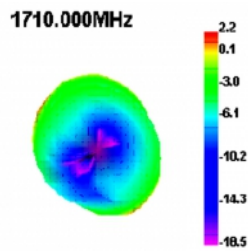
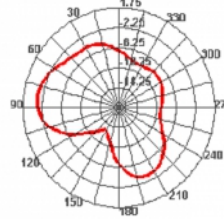
1700.000MHz H



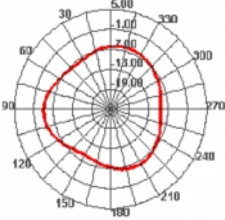
1700.000MHz E1



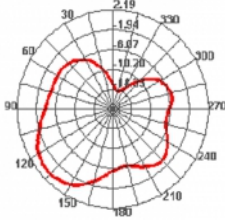
1700.000MHz E2



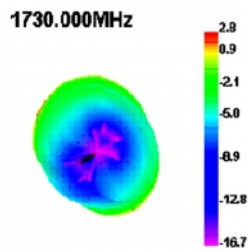
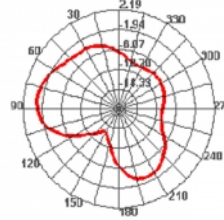
1710.000MHz H



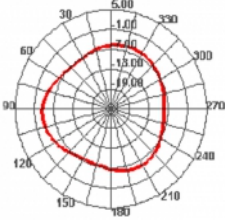
1710.000MHz E1



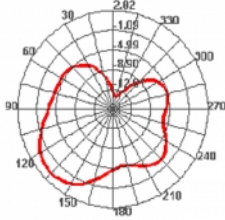
1710.000MHz E2



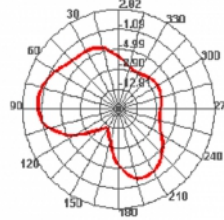
1730.000MHz H



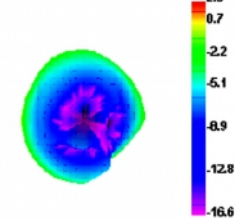
1730.000MHz E1



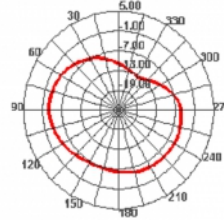
1730.000MHz E2

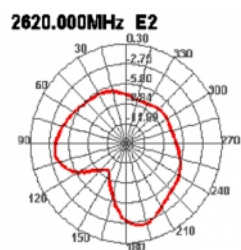
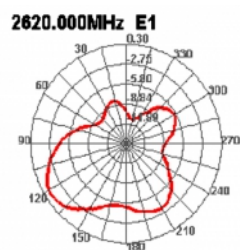
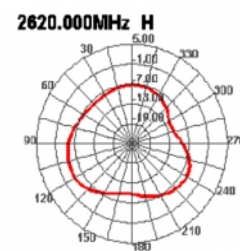
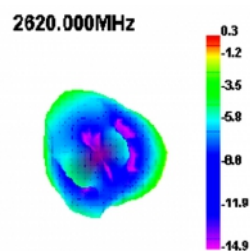
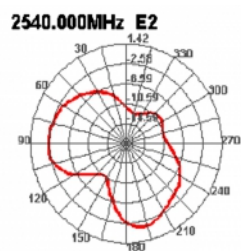
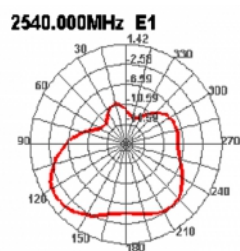
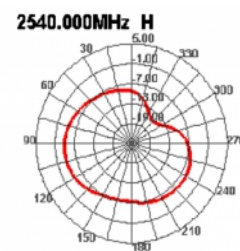
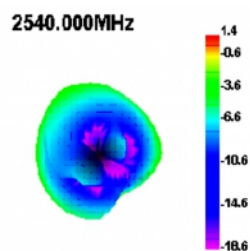
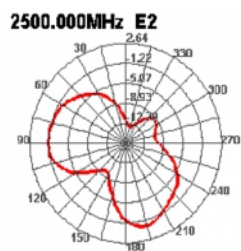
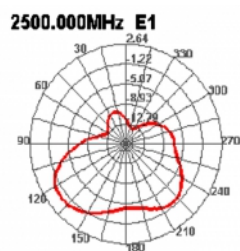


2500.000MHz



2500.000MHz H





General

Mounting type:	Self adhesive
Suitable for indoor:	yes

Interface

connector:	1 x I-PEX Inc., MHF® I plug
------------	-----------------------------

Technical characteristics

Frequency range:	1710 - 2700 MHz 690 - 960 MHz
Antenna gain:	2 - 3 dBi
Impedance:	50 Ω
Operating temperature:	-10 °C ~ 55 °C
VSWR:	1.5

Physical characteristics

Antenna type:	PCB
Cable category:	coaxial
Cable attenuation:	3.2 dB @ 2.4 GHz per meter
Cable colour:	grey
Cable length incl. connector:	10 cm
Length:	96.0 mm
Width:	14.0 mm
Height:	0.9 mm
Smallest bending radius:	4.5 mm