

Delock PCI Express Card to 4 x Serial, 1 x Parallel

Description

This PCI Express card by Delock expands the PC by four external serial ports and one external parallel port. Different devices, such as scanner, printer, mouse etc., can be connected to the card.



Specification

- Connectors:
 - external:
 - 2 x serial RS-232 DB9 male
 - 2 x serial RS-232 DB9 male (separate rear bracket)
 - 1 x Parallel DB25 female (separate rear bracket)
 - internal:
 - 1 x PCI Express x1, V1.0a
- Chipset: Moschip MCS9922
- Data transfer rate:
 - serial up to 115.2 Kb/s
 - parallel up to 1.5 Mb/s
- FIFO: 16 byte
- SPP, EPP, ECP compatible to IEEE 1284
- Compatible with 16C550 UART serial port

System requirements

- Windows Server-2003/Vista/7/8/8.1/10/10-64/11, Linux Kernel 2.6
- PC with one free PCI Express slot and two rear slot

Package content

- PCI Express card
- 2 x rear bracket
- 5 x low profile bracket
- Driver CD
- User manual

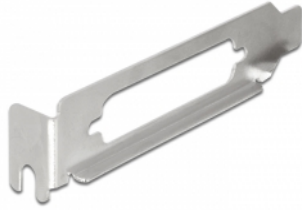
Item no. 89177

EAN: 4043619891771

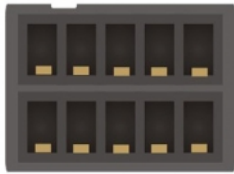
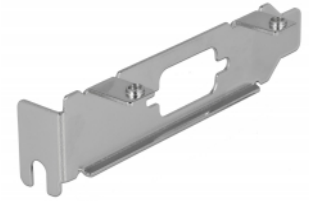
Country of origin: China

Package: Retail Box

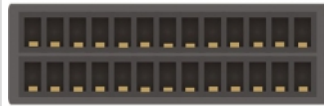
Images



3 x



COM



LPT



- | | |
|--|---|
| <ul style="list-style-type: none"> ① 2 x Serial RS-232C DB9 male ② 2 x Serial RS-232C DB9 male ③ 1 x Parallel DB25 female | <ul style="list-style-type: none"> ④ 1 x PCI Express x1, V1.0a ⑤ 2 x 9-pin COM port pin header male ⑥ 1 x 25-pin parallel port pin header male |
|--|---|

General	
Form factor:	Low Profile
Specification:	RS-232 (EIA / TIA) PCIe 1.1
Supported operating system:	Linux Kernel 2.6 or above Windows 10 32-bit Windows 10 64-bit Windows 7 32-bit Windows 7 64-bit Windows 8 32-bit Windows 8 64-bit Windows 8.1 32-bit Windows 8.1 64-bit Windows Server 2003 32-bit Windows Server 2003 64-bit Windows Vista 32-bit Windows Vista 64-bit Windows 11
Slot:	PCIe
Interface	
External:	4 x serial RS-232 DB9 male 1 x Parallel DB25 female
Internal:	1 x PCI Express x1, V1.1
Technical characteristics	
Chipset:	ASIX MCS9922
Data transfer rate:	4 x up to 230,4 Kbps
FIFO:	4 x 256 Byte
UART:	16C450 / 16C550 / 16C650
Physical characteristics	
Slot bracket:	low profile standard
Colour:	black