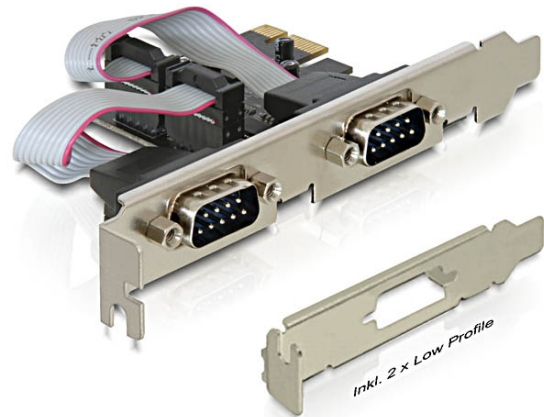


# Delock PCI Express Card > 2 x Serial

## Description

The PCI Express card by Delock expands a PC by two external serial ports. Different devices such as scanner, printer, mouse etc. can be connected to this card. By using the included low profile brackets, the PCI Express card can be also installed into a Mini-PC.



## Specification

- Connectors:  
external: 2 x serial RS-232 DB9 male  
internal: 1 x PCI Express x1, V1.1
- Chipset: Oxford
- Data transfer rate up to 230.4 Kbps
- Compatible with 16C950 UART
- FIFO: 128 byte

## System requirements

- Windows 7/7-64/8.1/8.1-64/10/10-64
- PC with one free PCI Express slot

## Package content

- PCI Express card
- 2 x low profile bracket
- Driver CD
- User manual

## Item no. 89220

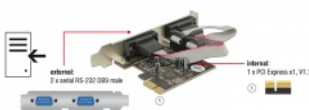
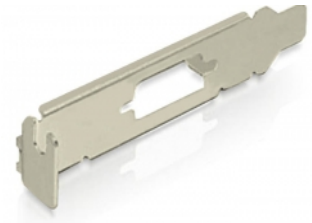
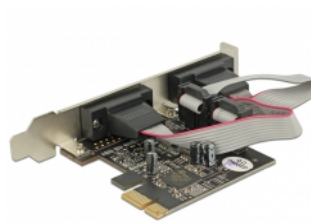
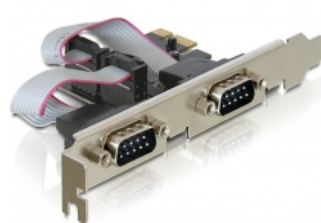
EAN: 4043619892204

Country of origin: China

Package: Retail Box



## Images



General	
Form factor:	Low Profile
Function:	Compliant with PCI Power Management 1.2
Specification:	PCIe 1.1
Supported operating system:	Windows 7 32-bit Windows 7 64-bit Windows 8.1 32-bit Windows 8.1 64-bit Windows 10 32-bit Windows 10 64-bit
Slot:	PCIe
Interface	
External:	2 x serial RS-232 DB9 male
Internal:	1 x PCI Express x1, V1.1
Technical characteristics	
Chipset:	OXPCIe952
Data transfer rate:	up to 230.4 Kb/s
FIFO:	128 byte
UART:	16C950
Physical characteristics	
Pin finishing:	gold-plated
Screw type:	#4-40 UNC
Slot bracket:	low profile standard
Depth:	11.1 mm
Width:	65 mm
Height:	59 mm
Colour:	anthracite