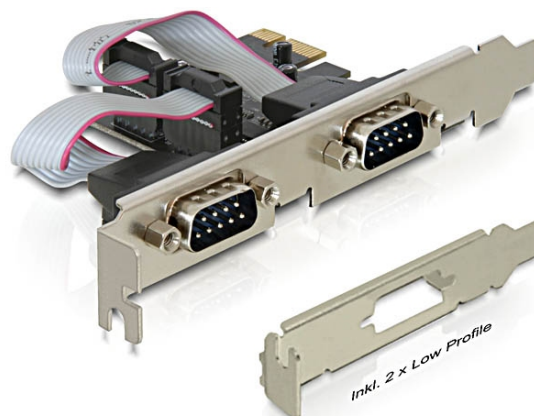


## Delock Scheda PCI Express > 2 x seriale

### Descrizione

La scheda PCI Express Delock espande il PC di due porte seriali esterne. È possibile collegare vari dispositivi, tra cui scanner, stampante, mouse, ecc., a questa scheda. Utilizzando le staffe a basso profilo incluse, la scheda PCI Express può essere installata anche in un Mini-PC.



### Specifiche

- Connettori:  
esterno: 2 x RS-232 DB9 seriale maschio  
interno: 1 x PCI Express x1, V1.1
- Chipset: Oxford
- Velocità di trasferimento dati fino a 230,4 Kbps
- Compatibile con 16C950 UART
- FIFO: 128 byte

### Requisiti di sistema

- Windows 7/7-64/8.1/8.1-64/10/10-64
- PC con uno slot PCI Express libero

### Contenuto della confezione

- Scheda PCI Express
- 2 x staffa a basso profilo
- CD contenente il driver
- Manuale utente

### Articolo n. 89220

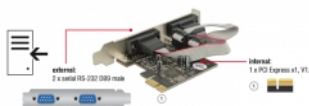
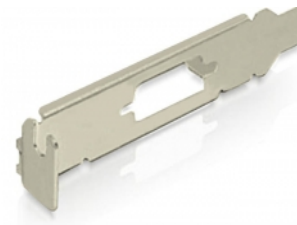
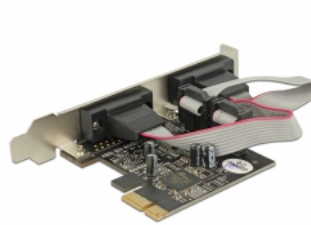
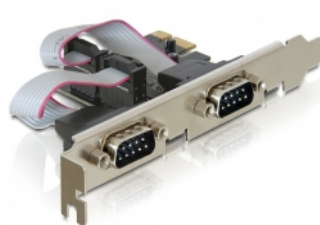
EAN: 4043619892204

Paese di origine: China

Pacchetto: Retail Box



### Immagini



General	
Παράγοντας μορφής:	Low Profile
Λειτουργία :	Compliant with PCI Power Management 1.2
Προδιαγραφές:	PCIe 1.1
Supported operating system:	Windows 7 32-bit Windows 7 64-bit Windows 8.1 32-bit Windows 8.1 64-bit Windows 10 32-bit Windows 10 64-bit
Slot:	PCIe
Interface	
Εξωτερικά:	2 x σειριακή αρσενική θύρα RS-232 DB9
Εσωτερικός:	1 x PCI Express x1, V1.1
Technical characteristics	
Chipset:	OXPCIe952
Ρυθμός μεταφοράς δεδομένων:	up to 230.4 Kb/s
FIFO:	128 byte
UART:	16C950
Physical characteristics	
Τελείωμα ακίδας:	επιχρυσωμένη
Τύπος βίδας:	#4-40 UNC
Slot bracket:	low profile standard
Depth:	11.1 mm
Width:	65 mm
Height:	59 mm
Χρώμα:	ανθρακίτης