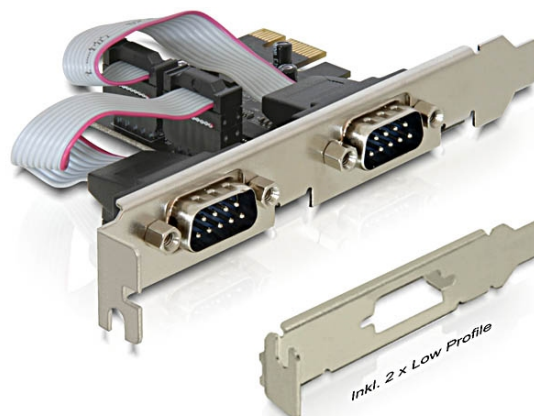


Delock Placă PCI Express > 2 x seriale

Descriere scurta

Placa PCI Express de la Delock extinde PC-ul cu două porturi seriale externe. La această placă se pot conecta diferite dispozitive, precum un scanner, o imprimantă, un mouse etc. Prin folosirea suporturilor cu profil redus incluse, placa PCI Express poate fi instalată și într-un Mini-PC.



Specificatii

- Conectori:
extern: 2 x RS-232 seriale DB9, tată
intern: 1 x PCI Express x1, V1.1
- Chipset: Oxford
- Rată de transfer a datelor de până la 230,4 Kbps
- Compatibil cu 16C950 UART
- FIFO: 128 octeți

Cerinte de sistem

- Windows 7/7-64/8.1/8.1-64/10/10-64
- PC cu slot PCI Express liber

Pachetul contine

- Placă PCI Express
- 2 x console cu profil redus
- CD cu drivere
- Manual de utilizare

Nr. 89220

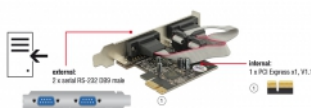
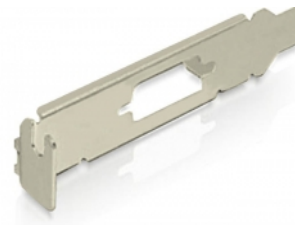
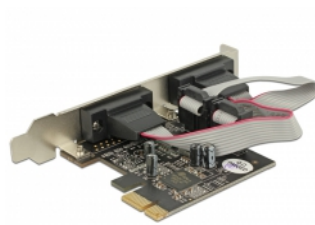
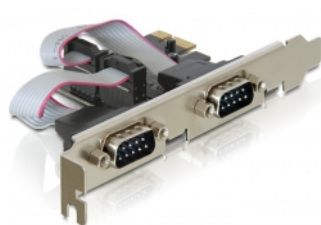
EAN: 4043619892204

Țara de origine: China

Pachet: Retail Box



Imagini



General	
Formă:	Low Profile
Function:	Compliant with PCI Power Management 1.2
Specification:	PCIe 1.1
Supported operating system:	Windows 7 32-bit Windows 7 64-bit Windows 8.1 32-bit Windows 8.1 64-bit Windows 10 32-bit Windows 10 64-bit
Slot:	PCIe
Interface	
External:	2 x RS-232 seriale DB9, tată
Internal:	1 x PCI Express x1, V1.1
Technical characteristics	
Chipset:	OXPCIe952
Data transfer rate:	up to 230.4 Kb/s
FIFO:	128 byte
UART:	16C950
Physical characteristics	
Pin finishing:	gold-plated
Tipul șurubului:	#4-40 UNC
Slot bracket:	low profile standard
Depth:	11.1 mm
Width:	65 mm
Height:	59 mm
Colour:	anthracite