

# Delock PCI Express x4 Card to 1 x NVMe M.2 Key M for Server with heat sink

## Description

This PCI Express card by Delock expands the PC by one **M.2 slot**. One M.2 module in 2280, 2260, 2242 or 2230 format can be connected. If the card will be installed in the PC, the slot bracket does not have to be removed. Due to the small height, the card can also fit into for servers with one unit height (1U).



## Specification

- Connectors:
  - 1 x 67 pin M.2 key M slot
  - 1 x PCI Express x4, V4.0
- Interface: PCIe
- Supports M.2 modules in format 2280, 2260, 2242 and 2230 with key M or key B+M based on PCIe
- Bootable, ex UEFI version 2.3.1
- Supports NVM Express (NVMe)
- Supports S.M.A.R.T.
- Supports TRIM
- Holder for lock on PCI Express x16 slots
- Dimensions (LxWxH) without PCIe connector and lock holder: ca. 94 x 22 x 6 mm

## System requirements

- Linux Kernel 5.8 or above
- Windows 8.1/8.1-64/10/10-64
- Windows Server 2019
- PC with one free PCI Express x4 / x8 / x16 / x32 slot

## Package content

- PCI Express card
- 1 x heat sink
- 3 x thermal conductive pad
- 1 x rubber nipple
- Screwdriver
- Screws
- User manual

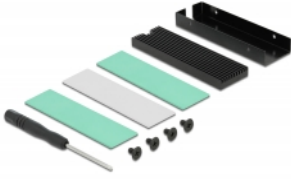
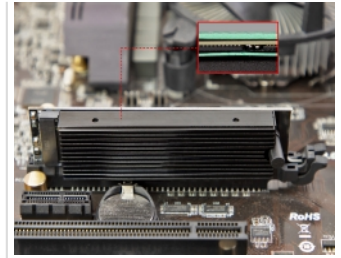
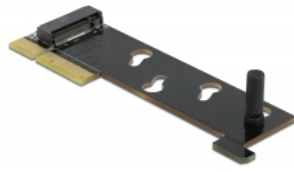
## Item no. 90067

EAN: 4043619900671

Country of origin: China

Package: Retail Box

Images



**General**

Function:	Bootable, ex UEFI 2.3.1 NVM Express (NVMe) TRIM S.M.A.R.T.
Supported operating system:	Linux Kernel 5.8.0 or above Windows 10 32-bit Windows 10 64-bit Windows 8.1 32-bit Windows 8.1 64-bit Windows Server 2019
Supported module:	M.2 modules in format 2280, 2260, 2242 and 2230 with key M or key B+M based on PCIe
Maximum height of the components on the module:	1.5 mm application of double-sided assembled modules supported

**Interface**

Connector 1:	1 x 67 pin M.2 key M slot
Connector 2:	1 x PCI Express x4, V4.0