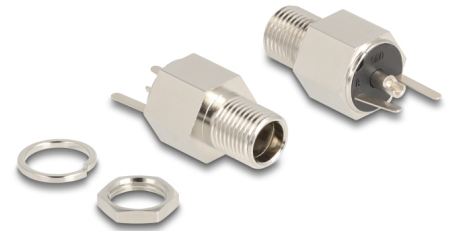


Delock Connector DC 5.5 x 2.5 mm female bulkhead soldering version - Hexagon 20 V / 9 A

Description

This DC female bulkhead by Delock can be installed or cabled in a housing or a device in order to supply it with power.



DC 5.5 x 2.5 mm

20 V / 9 A

Item no. 90188

EAN: 4043619901883

Country of origin: Taiwan,
Republic of China

Package: Zip poly bag

Technical details

- Connectors:
 - 1 x DC 5.5 x 2.5 x 12.0 mm female
 - 3 x solder connection
- Suitable for DC pin length: 9.5 mm / 12 mm
- Operating voltage: 20 V DC
- Current: max. 9 A
- Hexagon base
- Thread type: M8*P0.75
- Mounting depth: ca. 17.1 mm
- Visible height when installed: ca. 8.5 mm

Specification of power connector

- Dimensions:
 - inside: \varnothing ca. 2.5 mm
 - outside: \varnothing ca. 5.5 mm
 - depth: ca. 12.0 mm

Package content

- DC female bulkhead

Interface

Connector:	1 x DC 5.5 x 2.5 mm jack bulkhead
------------	-----------------------------------

Physical characteristics

Pin finishing:	nickel-plated
----------------	---------------

Herstellerinformation

Strasse	Beeskowdamm 13/15
PLZ	14167
Ort	Berlin
Land	Deutschland
E-Mail	info@delock.de
Webseite	www.delock.de