

Delock PCI Express x1 Card to 2 x Serial RS-232 + 1 x Parallel IEEE1284

Description

The PCI Express card by Delock expands a PC by two external serial ports as well as one external parallel port. Different devices such as scanner, printer, mouse etc. can be connected to this card.



Item no. 90413

EAN: 4043619904136

Country of origin: China

Package: Retail Box

Technical details

- Connectors:
 - external:
 - 2 x serial RS-232 DB9 male (separate rear bracket)
 - 1 x Parallel DB25 female
 - internal:
 - 1 x PCI Express x1, V1.1
- Chipset: WCH CH384L
- Operating temperature: -40 °C ~ 85 °C
- Relative humidity: 0 - 95 % (non condensing)
- Dimensions (LxWxH): ca. 79 x 59 x 11 mm
- Serial specification:
 - Data transfer rate up to 460.8 Kbps
 - FIFO: 256 byte
 - Compatible with 16C950 UART
- Parallel specification:
 - Data transfer rate up to 1.5 Mbps
 - FIFO: 256 byte
- Supports SPP, Byte and ECP mode

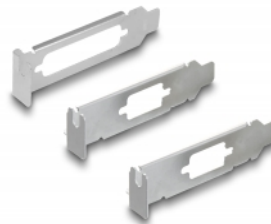
System requirements

- Windows 7/7-64/8.1/8.1-64/10/10-64/11
- PC with one free PCI Express slot

Package content

- PCI Express card
- Slot bracket
- 3 x low profile bracket
- Driver CD
- User manual

Images



General

Specification:	RS-232 (EIA / TIA) PCIe 1.1 SPP, EPP, ECP
Supported operating system:	Windows 10 32-Bit Windows 10 64-Bit Windows 7 32-Bit Windows 7 64-Bit Windows 8.1 32-Bit Windows 8.1 64-Bit Windows 11
Slot:	PCIe

Interface

External:	1 x parallel port 2 x serial RS-232 DB9 plug
Internal:	1 x PCI Express x1, V1.1

Technical characteristics

Chipset:	WCH CH382L
Data transfer rate:	up to 460,8 Kbps LPT up to 1.5 MBps
FIFO:	256 Byte
UART:	16C550 16C552 16C554

Physical characteristics

Slot bracket:	Low Profile standard
---------------	-------------------------