

Delock Barcode Scanner Module 1D and 2D - German Version

Description

This barcode scanner module by Delock can be used for installation in any housing.

Small but powerful

The module convinces with a size of 21 x 14 x 9 mm. **All common 1D and 2D barcode** types can be precisely captured even at long distances. Additionally, the scanner recognizes barcodes displayed on displays and monitors.

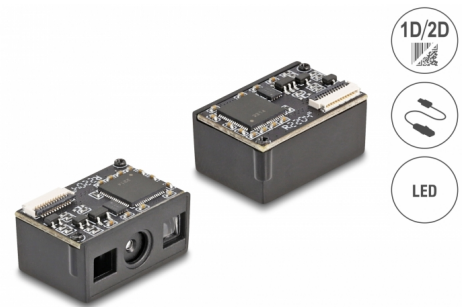
Automatic adaptation to ambient brightness

The scanner automatically adapts to the ambient brightness and captures up to **30 scans per second** under optimal lighting conditions.

In low ambient brightness, the barcode is illuminated by an **additional white LED** and can therefore also be used in poor lighting conditions.

Note

This module is intended exclusively for the output of the German keyboard.



21 x 14 x 9 mm

Item no. 90603

EAN: 4043619906031

Country of origin: China

Package: White Box

Technical details

- Connector: 1 x FPC 12 pin female
- Decoding chip: ARM Cortex 32 Bit
- Resolution: max. 640 x 480
- Reading distance: ca. 30 mm to 350 mm
- Reading accuracy: 4 mil
- Light colour: visible LED red
- Compensation light: LED white
- Sensor: CMOS image sensor
- Scan rate: up to 30 scans per second
- Scan angle: 44°

- Surrounding brightness: max. 100000 Lux
- Input voltage: 3.3 V
- Current consumption:
operation: max. 110 mA
standby: max. 60 mA
- Operating temperature: -20 °C ~ 60 °C
- Storage temperature: -40 °C ~ 80 °C
- Relative humidity: 0 - 95 % (non condensing)
- Colour: black
- Weight: ca. 2 g
- Dimensions (LxWxH): ca. 21 x 14 x 9 mm
- Scancodes:
Code 128
Code 39
Interleaved 2 of 5
EAN-8 / EAN-13
ISBN - 13
Data Matrix
PDF417
QR Code

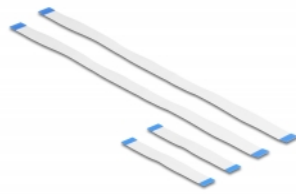
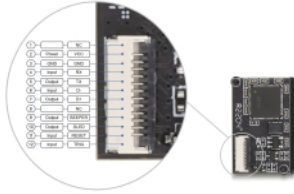
System requirements

- Android 11.0 or above
- iPad Pro (2018)
- Linux Kernel 5.15 or above
- Mac OS 12.4 or above
- Windows 8.1/8.1-64/10/10-64/11

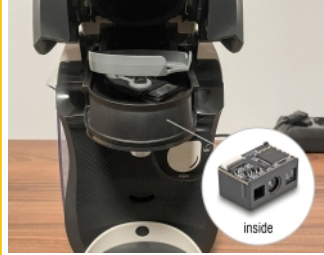
Package content

- Barcode scanner module
- 2 x FPC 12 pin flat ribbon cable, length ca. 6 cm
- 2 x FPC 12 pin flat ribbon cable, length ca. 20 cm
- User manual

Images



Pin	Pin Input / Output	Define	Description
FW1	-	NC	
FW2	Power	VCC	Input +5.0V
FW3	GND	GND	-
FW4	Input	KX	Release
FW5	Output	TX	Send
FW6	Input	D-	USB D-
FW7	Output	D+	USB D+
FW8	-	NC	
FW9	Output	BEEPFR	Alarmfunktion (nicht aktiviert)
FW10	Output	DLED	Druckfunktion (nicht aktiviert)
FW11	Input	RESET	Reset (nicht aktiviert, nur bei Firmware-Update)
FW12	Input	TRIG	Trigger (nicht aktiviert, nur bei Firmware-Update)



Technical characteristics

Operating voltage:	3.3 V
Operating temperature:	-20 °C ~ 60 °C
Current consumption:	Betrieb: max. 110mA Standby: max. 60mA
Resolution:	640 x 480
Scan rate:	30 Scans pro Sekunde
Reading distance:	30 mm - 350 mm
Sensor:	CMOS Bildsensor
Scancodes:	EAN-8 EAN-13 Interleaved 2 of 5 Standard Code 39 Code 128 PDF417 DataMatrix QR Code ISBN - 13
Surrounding brightness:	100000 Lux

Physical characteristics

Weight:	2 g
Length:	21.0 mm
Height:	9.0 mm
Colour:	black