

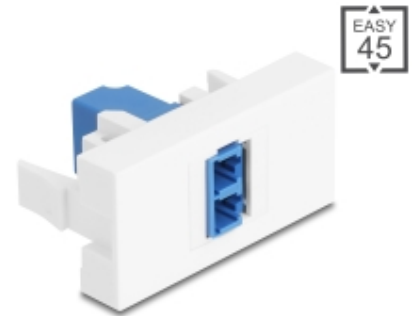
Easy 45 Module LC Duplex female to LC Duplex female white / blue

Description

This Easy 45 module by Delock is designed to provide a optical fiber port and can be attached to the Delock Easy 45 module system. The simple snap-in mechanism ensures that the module is firmly in place and can be easily removed if necessary.

Easy 45 connects

Easy 45 is a variable, modular system that allows components such as sockets, HDMI or USB connections to be added according to your needs. The Easy 45 modules are standardised and can be mounted in various module holder or cable ducts. Easy 45 builds the interface between electrical, network and system installation and many peripheral devices such as TV, monitors, printers, laptops and much more.



Item no. 90847

EAN: 4043619908479

Country of origin: China

Package: Zip poly bag

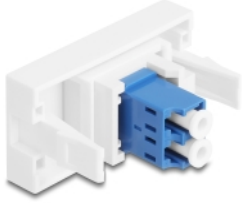
Technical details

- Connectors:
1 x LC Duplex female
1 x LC Duplex female
- For single-mode fiber
- ~~Distances~~
- Suitable for module holder Delock Easy 45
- Module size: 22.5 x 45 mm
- Colour: white / blue

Package content

- Easy 45 module

Images



General

Style:	both sides identical
--------	----------------------

Interface

Connector 1:	1 x LC Duplex female
Connector 2:	1 x LC Duplex female

Physical characteristics

Length:	45 mm
Width:	22.5 mm
Colour:	blue white

Manufacturer information

Street Beeskowdamm 13/15
 Postal code 14167
 City Berlin
 Country Deutschland
 E-Mail info@delock.de
 Website www.delock.de

