

Easy 45 Module DC 5.5 x 2.5 mm female to DC 5.5 x 2.1 mm male black

Description

This Easy 45 module by Delock is designed to provide an DC port and can be attached to the Delock Easy 45 module system. The simple snap-in mechanism ensures that the module is firmly in place and can be easily removed if necessary.

Easy 45 connects

Easy 45 is a variable, modular system that allows components such as sockets, HDMI or USB connections to be added according to your needs. The Easy 45 modules are standardised and can be mounted in various module holder or cable ducts. Easy 45 builds the interface between electrical, network and system installation and many peripheral devices such as TV, monitors, printers, laptops and much more.

Please Note

To ensure the correct function of the connected device, it must match the specifications for voltage, current and polarity of the power supply.



Item no. 90962

EAN: 4043619909629

Country of origin: China

Package: Zip poly bag

Technical details

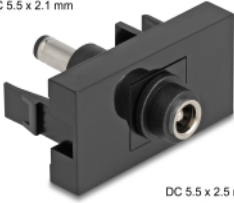
- Connectors:
 - 1 x DC 5.5 x 2.5 mm female
 - 1 x DC 5.5 x 2.1 mm male
- Suitable for module holder Delock Easy 45
- Module size: 22.5 x 45 mm
- Dimensions (LxWxH): ca. 22.5 x 45.0 x 42.3 mm
- Colour: black

Package content

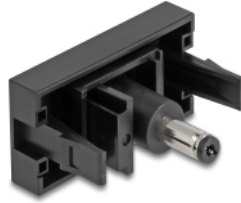
- Easy 45 Module

Images

DC 5.5 x 2.1 mm



DC 5.5 x 2.5 mm



Interface

Connector 1:	1 x DC 5.5 x 2.5 mm female
Connector 2:	1 x DC 5.5 x 2.1 mm male

Physical characteristics

Length:	22.5 mm
Width:	45.0 mm
Height:	42.3 mm
Colour:	black

Manufacturer information

Street Beeskowdamm 13/15
 Postal code 14167
 City Berlin
 Country Deutschland
 E-Mail info@delock.de
 Website www.delock.de

