

SATA 3.5" Card Reader for CFast

Description

This Card Reader can be installed into a 3.5" bay or a PC slot of your PC and will be connected to a free SATA port of your motherboard. The CFast card works as additional memory as well as a HDD for an operating system from which you can also boot.



Item no. 91680

EAN: 4043619916801

Country of origin: Taiwan,
Republic of China

Package: Retail Box

Technical details

- Connectors:
external:
1 x CFast slot
internal:
1 x SATA 22 pin plug
- Push to push CFast socket
- Bootable
- Supports CFast type I / II memory cards
- Supports CFast 1.0 and 2.0
- For installation into a 3.5" bay or PC slot or low profile PC slot
- OS independent, no driver installation necessary

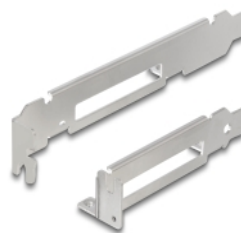
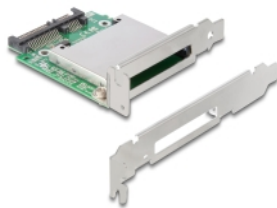
System requirements

- PC with a free 3.5" bay or PC with one free slot
- A free SATA port

Package content

- Card reader SATA to CFast
- SATA data / power cable
- Slot bracket
- Low profile bracket
- Screws
- User manual

Images



Manufacturer information

Street	Beeskowdamm 13/15
Postal code	14167
City	Berlin
Country	Deutschland
E-Mail	info@delock.de
Website	www.delock.de